

# VILLA OM

3110 SHERIDAN AVE.  
MIAMI BEACH, FL. 33139

## SYSTEM MANUFACTURER & TYPE.

### DELTA DOORS MANUFACTURING CORPORATION

7500 NW 69th AVENUE  
MIAMI, FL. 33166.

-SERIES "DH-350" ALUMINUM OUTSWING ENTRANCE DOOR WITH TRANSOM AND SIDELITES

### R.C. ALUMINUM INDUSTRIES, INC.

2805 NW 75th AVENUE  
MIAMI, FL. 33122.

- SERIES "CM100" ALUMINUM CASEMENT WINDOW.(L.M.I.)
- SERIES "FX100" ALUMINUM FIXED WINDOW.(L.M.I.)
- SERIES "HR100" ALUMINUM HORIZONTAL ROLLING WINDOW.(L.M.I.)
- SERIES "2400ST" ALUMINUM SLIDING GLASS DOOR.(L.M.I.)
- SERIES "ML100" ALUMINUM TUBE MULLION(L.M.I.)

### VISTAWALL

### ARCHITECTURAL PRODUCTS

803 AIRPORT ROAD  
TERRELL, TX. 75160

SERIES "HR-250" CAPTURED ALUMINUM COURAIN WALL SYSTEM.(L.M.I)

## PRODUCT CONTROL APPROVAL.

### DELTA DOORS MANUFACTURING CORPORATION

-ACCEPTANCE NO: 04-1123.01  
EXP: 02-10-2010.  
SERIES "DH-350" ALUM. OUTSWING ENTRANCE DOOR WITH TRANSOM & SIDELITES.

### R.C. ALUMINUM INDUSTRIES, INC.

-ACCEPTANCE NO: 06-1130.01.  
EXP: 07-29-2009.  
SERIES CM100 ALUMINUM CASEMENT WINDOW.(L.M.I.)

-ACCEPTANCE NO: 05-0815.01.  
EXP: 08-19-2009.  
SERIES FX100 ALUMINUM FIXED WINDOW.(L.M.I.)

-ACCEPTANCE NO: 06-1130.02.  
EXP: 08-05-2009.  
SERIES HR100 ALUMINUM HORINZOTAL WINDOW.(L.M.I.)

-ACCEPTANCE NO: 07-0124.08  
EXP: 02-07-2012/  
SERIES "2400ST" ALUMINUM SLIDING GLASS DOOR.(L.M.I.)

-ACCEPTANCE NO: 04-0608.05  
EXP: 08-19-2009.  
SERIES "ML100" ALUMINUM TUBE MULLION.(L.M.I.)

### VISTAWALL ARCHITECTURAL PRODUCTS.

-ACCEPTANCE NO: 05-1102.09  
EXP: 10-05-2011  
HR-250 CAPTURED CURTAIN WALL SYSTEM.

**ALUMINUM FINISH: CLEAR ANODIZED.**

NOTE: ALL DIMENSIONS TO BE VERIFIED ON SITE

## ARCHITECTURE.

KOBI KARP ARCHITECTURE AND INTERIOR DESIGN  
2915 BISCAYNE BLVD. SUITE 200  
MIAMI, FL. 33137

### MISCELLANEOUS NOTES:

1. The quantities and dimensions shown on the drawings are based on the Architectural drawings done by Architecture Associates inc.
2. These shop drawings when approved constitute an authorization to fabricate materials with sizes as showed on these drawings, with the understanding that dimension tolerances on the structure and masonry elements are within the tolerances as prescribed by American Concrete Institute .
3. G.C. to provide on each floor proper construction control lines and bench mark for levelness.
4. Window Manufacturer shall field dimension each rough opening before fabrication.

## LEGEND & ABBREVIATIONS

F.O. = FRAME OPENING  
F.W. = FRAME WIDTH  
F.H. = FRAME HEIGHT  
D.L.O. = DAYLIGHT OPENING  
D.O. = DOOR OPENING DIMENSION  
M.D. = MODULE DIMENSION  
N.G.D. = NET GLASS DIMENSION  
G.C. = GENERAL CONTRACTOR  
O.D. = OPENING DIMENSION  
M.O. = MASONRY OPENING  
SP = SPLICE  
H.S. = HEAT STRENGTHEN  
TEMP. = TEMPERED.  
THK. = THICKNESS.  
LAM. = LAMINATED.  
A. = ACTIVE LEAF.

= WORK POINT = W.P.

= GLAZING TYPES

= REVISION MARK

= WIND LOAD ANCHOR = WL

= DEAD LOAD ANCHOR = DL

ELEV. x'-x" = ELEVATION DATUM

ELEVATION  
← DETAIL NUMBER  
← SHEET NUMBER

DETAIL

KEY PLAN  
← ELEVATION NUMBER  
← SHEET NUMBER

## GLAZING

① 9/16" THK. SOLEX GREEN LAM. GLASS  
-1/4" THK. SOLEX GREEN H.S.+  
-0.090" SENTRY GLASS PLUS INTERLAYER.+  
-1/4" THK CLEAR H.S.

② 9/16" THK. SOLEX GREEN LAM. GLASS  
-1/4" THK. SOLEX GREEN H.S.+  
-0.075" VANCEVA COMPOSITE BY SOLUTIA INTERLAYER.+  
-1/4" THK CLEAR H.S.

③ 5/16" THK. SOLEX GREEN LAM. GLASS  
-1/8" THK. CLEAR H.S.+  
-0.090" DUPONT BUTACITE PVB INTERLAYER.+  
-1/8" THK CLEAR H.S.

④ 9/16" THK. SOLEX GREEN LAM. GLASS  
-1/4" THK. SOLEX GREEN H.S.+  
-0.090" SOLUTIA SAFLEX PVB INTERLAYER.+  
-1/4" THK CLEAR H.S.

ALL GLASS COLOR MUST BE APPROVED BY OWNER BEFORE FABRICATION.

REVISION

BY

DATE

NO.

PROJECT NAME AND LOCATION:

GLASSLAND INC



APPROVED BY:

A.B.

DATE:

7/08/08.

DRAWING DISCRPTION:

COVER.

PROJECT NO.

1627

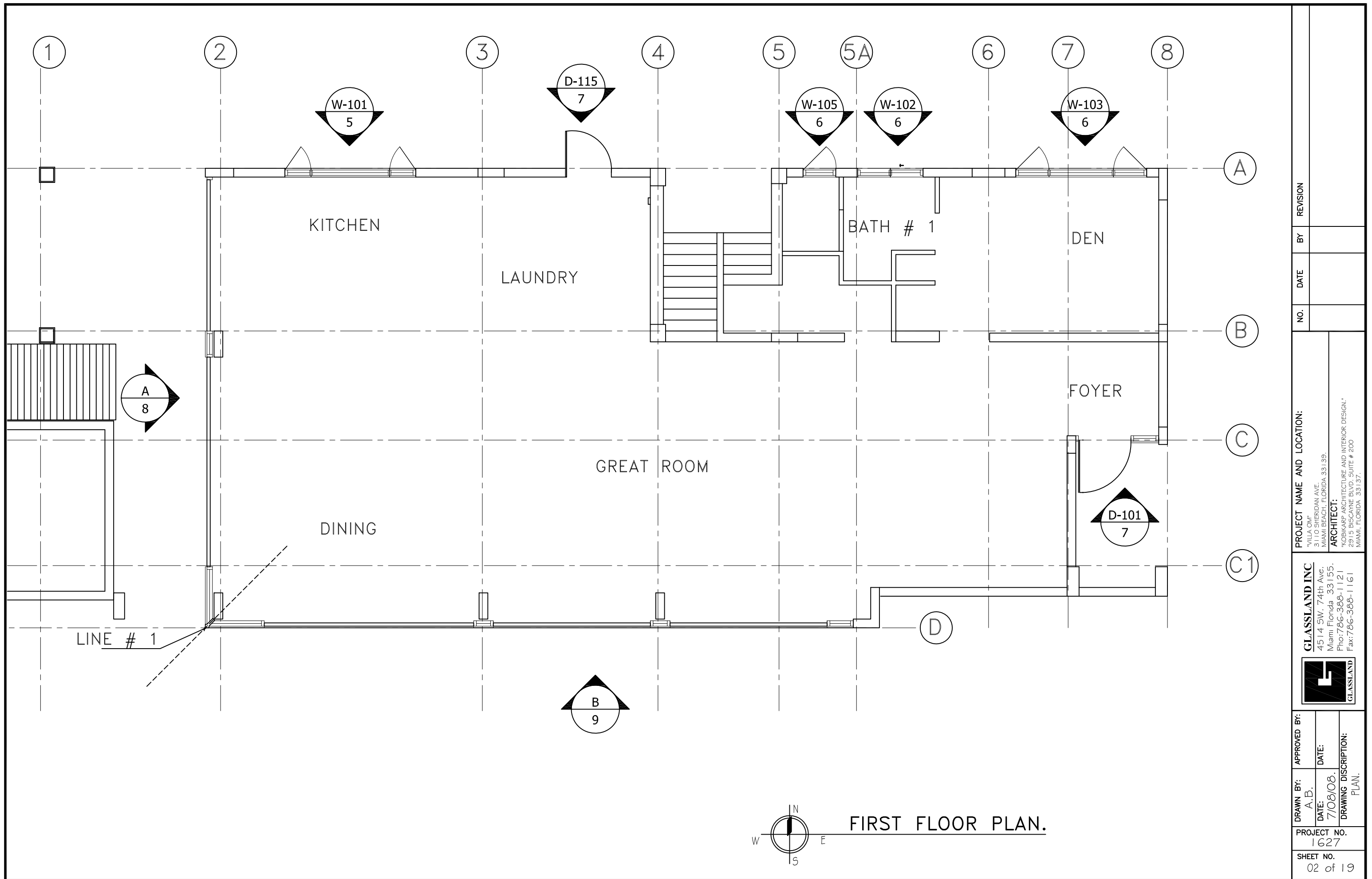
SHEET NO.

01 of 19

"VILLA OM" 3110 SHERIDAN AVE MIAMI BEACH, FLORIDA 33139.

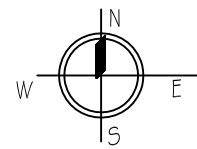
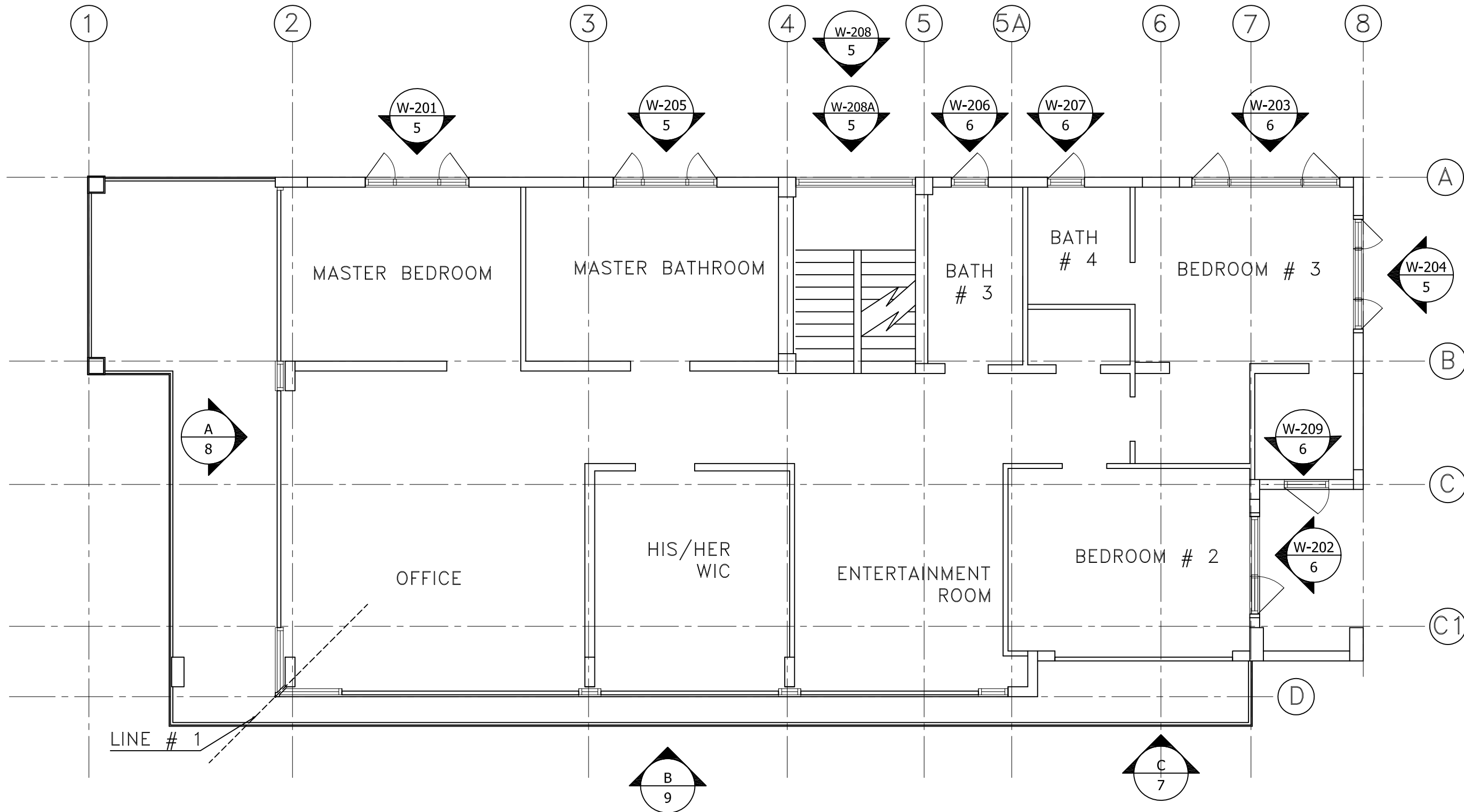
4514 SW. 74th Ave. Miami Florida 33155. Pno:786-388-1121 Fax:786-388-1161

ARCHITECT: "KOBIKARP ARCHITECTURE AND INTERIOR DESIGN," 2915 BISCAYNE BLVD. SUITE # 200 MIAMI, FLORIDA 33137.



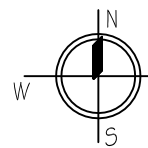
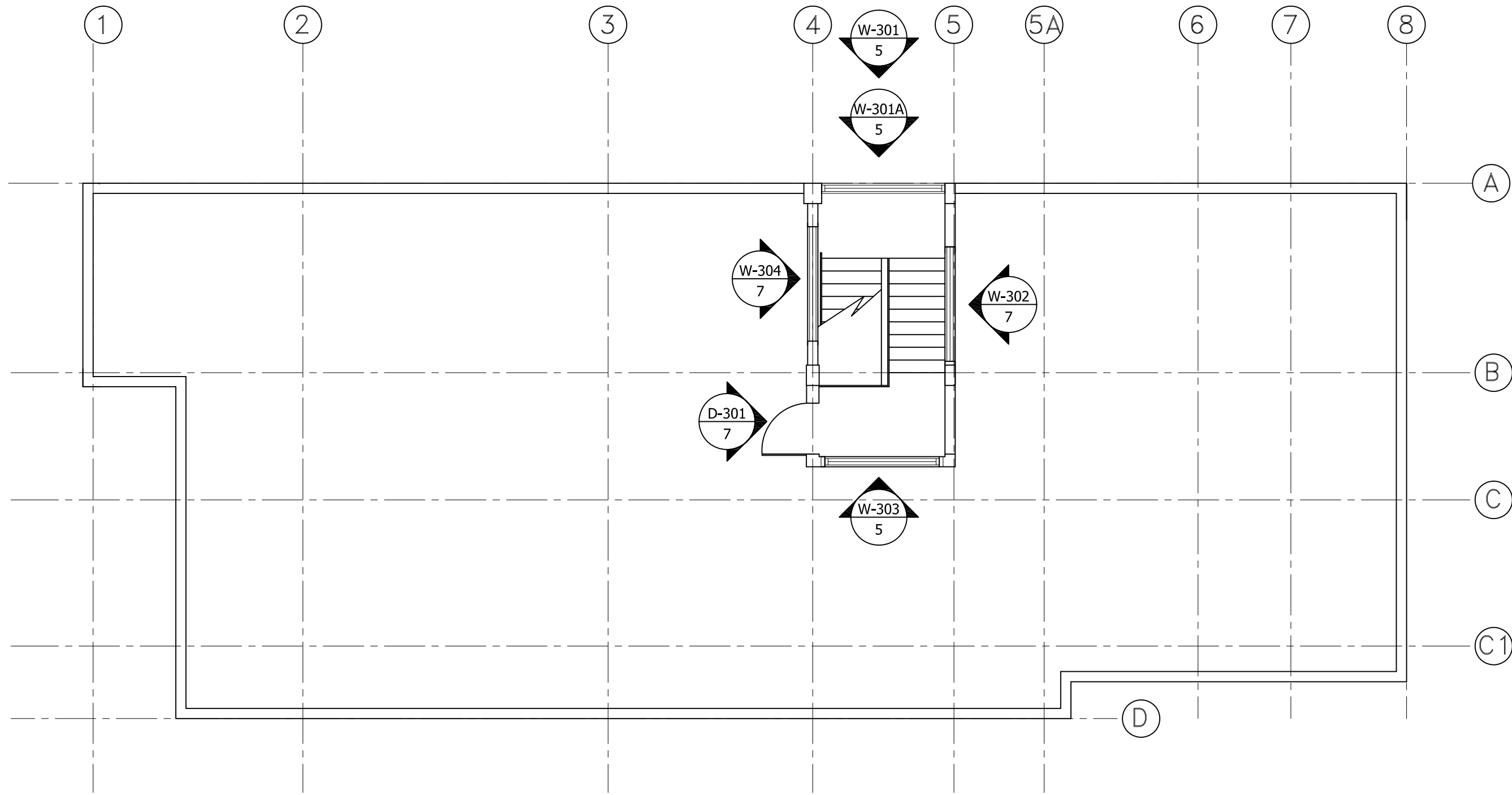
FIRST FLOOR PLAN.

PROJECT NAME AND LOCATION:		"VILLA ONE" 3110 SHERIDAN AVE. MIAMI BEACH, FLORIDA 33139.	
ARCHITECT:		*KOBKARP ARCHITECTURE AND INTERIOR DESIGN* 2915 DISCAYNE BLVD. SUITE # 200 MIAMI, FLORIDA 33137.	
PROJECT NO.	1627	APPROVED BY:	
SHEET NO.	02 of 19	DRAWN BY:	A.B.
		DATE:	7/08/08.
		DRAWING DESCRIPTION:	PLAN.
NO.		DATE	
BY		REVISION	



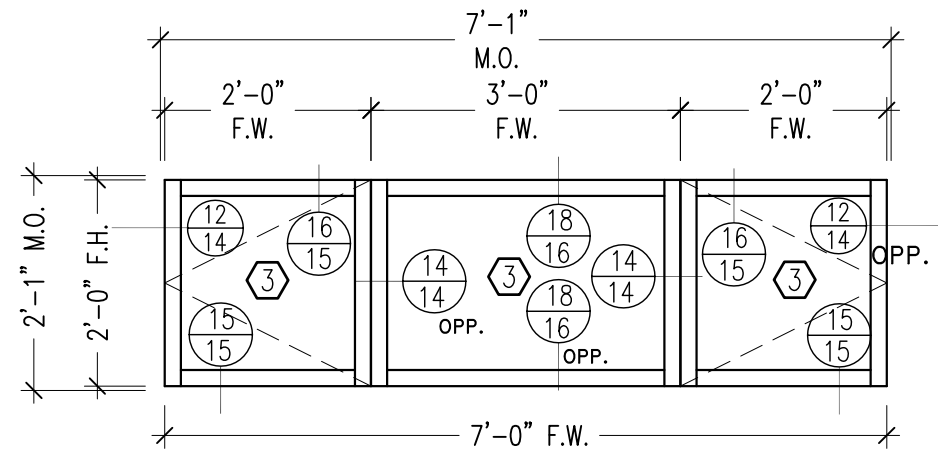
SECOND FLOOR PLAN.

PROJECT NAME AND LOCATION: "VILLA ONY" 3110 SHERIDAN AVE. MIAMI BEACH, FLORIDA 33139.		NO.	DATE	BY	REVISION
ARCHITECT: "KORKARP ARCHITECTURE AND INTERIOR DESIGN" 2915 BISCAYNE BLVD. SUITE # 200 MIAMI, FLORIDA 33137.					
GLASSLAND INC. 4514 SW 74th Ave. Miami, Florida 33155. Pho: 786-388-1121 Fax: 786-388-1161					
APPROVED BY:	DATE:				
DRAWN BY: A.B.	DATE: 7/08/08.	DRAWING DISCRIPTION: PLAN.			
PROJECT NO. 1627					
SHEET NO. 03 of 19					



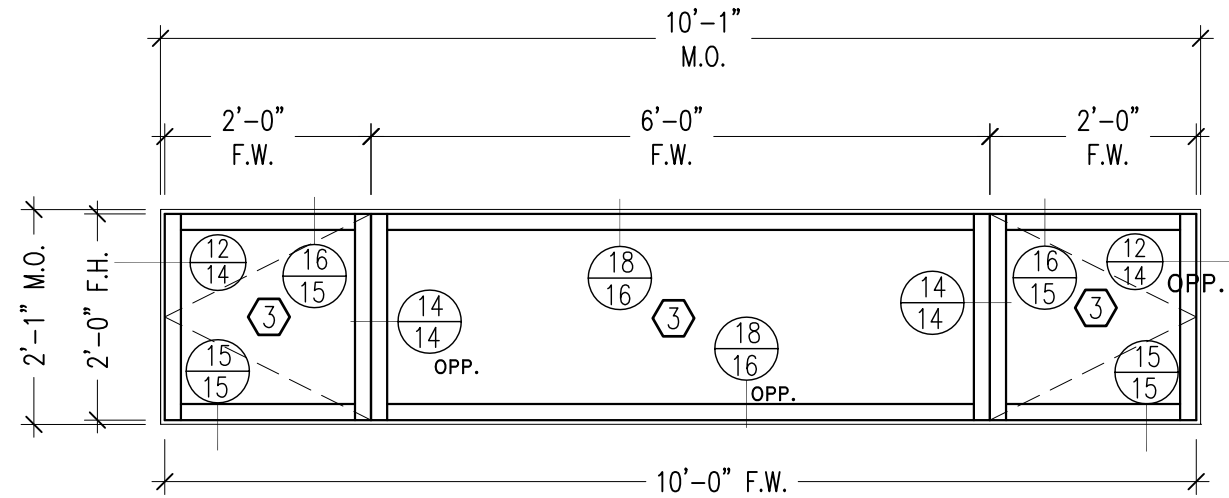
**ROOF/TERRACE FLOOR PLAN.**

<b>PROJECT NAME AND LOCATION:</b> "VILLA ONE" 3110 SHERIDAN AVE. MIAMI BEACH, FLORIDA 33139.		NO.	DATE	BY	REVISION
<b>ARCHITECT:</b> *KORKARP ARCHITECTURE AND INTERIOR DESIGN* 2915 BISCAYNE BLVD. SUITE # 200 MIAMI, FLORIDA 33137.					
<b>GLASSLAND INC</b> 4514 SW 74th Ave. Miami, Florida 33155. Pho: 786-388-1121 Fax: 786-388-1161					
<b>DRAWN BY:</b> A.B.	<b>APPROVED BY:</b>	<b>DATE:</b> 7/08/08.		<b>DRAWING DISCRIPTION:</b> PLAN.	
<b>PROJECT NO.</b> 1627		<b>SHEET NO.</b> 04 of 19			



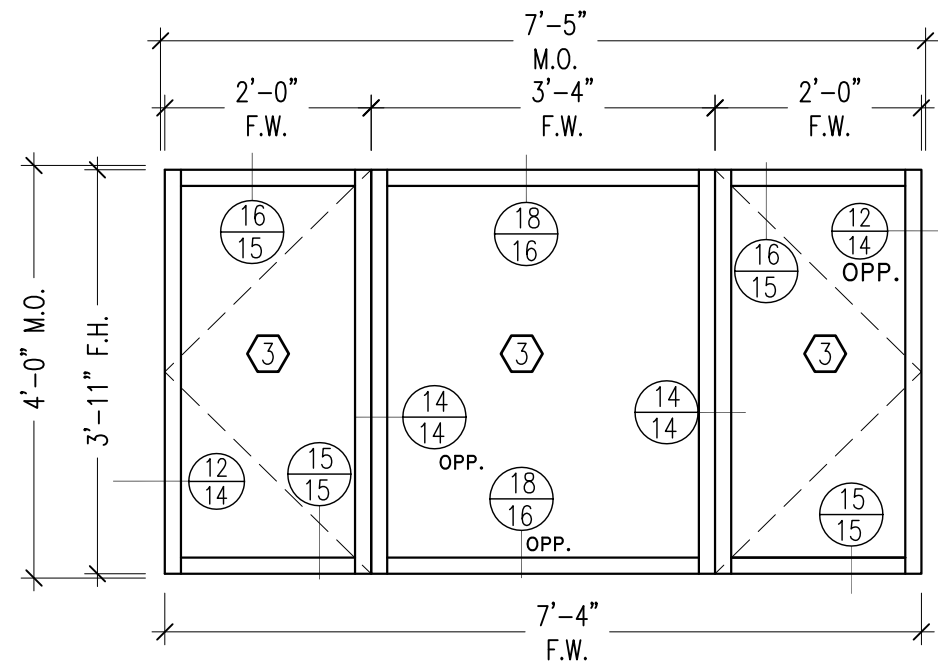
ELEVATION : W-205 WIND LOAD: +59.3 PSF  
-64.2 PSF

QTY. = 2  
"RC ALUMINUM CASEMENT WINDOWS CM-100" N.O.A. #06-1130.01  
RC ALUMINUM FIXED WINDOW FX100 N.O.A. #05-0815.01



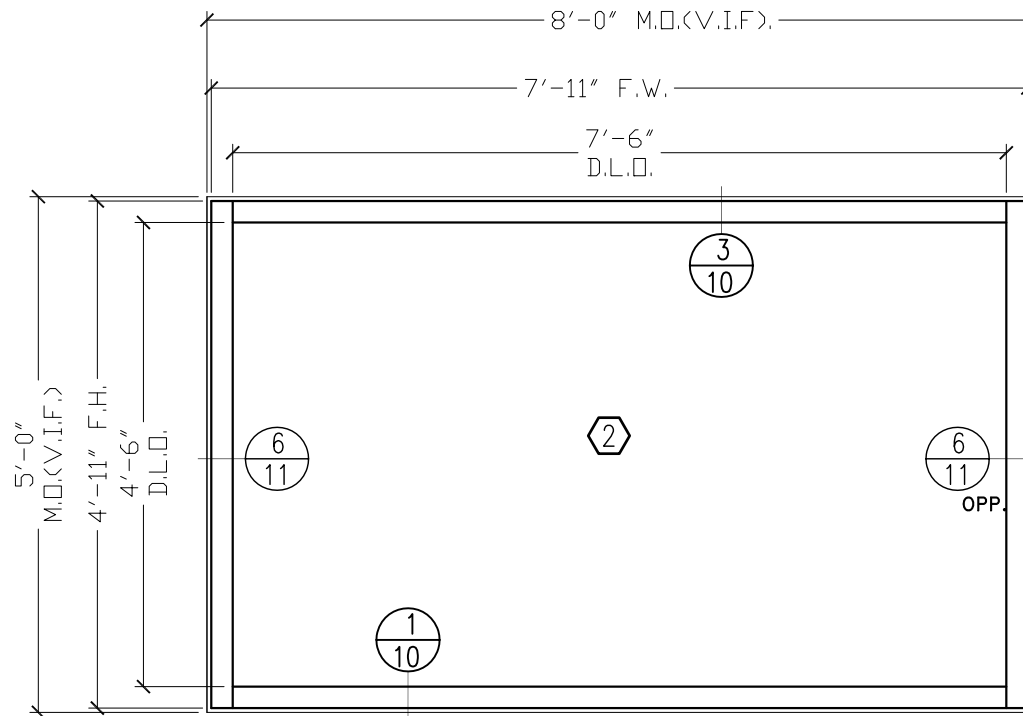
ELEVATION : W-101 WIND LOAD: +59.3 PSF  
-64.2 PSF

QTY. = 1  
"RC ALUMINUM CASEMENT WINDOWS CM-100" N.O.A. #06-1130.01  
RC ALUMINUM FIXED WINDOW FX100 N.O.A. #05-0815.01



ELEVATION : W-204 WIND LOAD: +59.3 PSF  
-79.0 PSF

QTY. = 1  
"RC ALUMINUM CASEMENT WINDOWS CM-100" N.O.A. #06-1130.01  
RC ALUMINUM FIXED WINDOW FX100 N.O.A. #05-0815.01



ELEVATION: W-208 WIND LOAD: +59.3 PSF  
-69.5 PSF

W-301 W-208A  
W-301A W-303  
QTY:5

VISTAWALL  
"HR-250" ALUM. CURTAIN  
WALL SYSTEM  
N.O.A:05-1102.09

PROJECT NAME AND LOCATION:

"VILLA ONE"  
3110 SHERIDAN AVE.  
MIAMI BEACH, FLORIDA 33139.  
ARCHITECT:  
"KOBIKARP ARCHITECTURE AND INTERIOR DESIGN"  
2915 BISCAYNE BLVD, SUITE # 200  
MIAMI, FLORIDA 33137.

GLASSLAND INC  
4514 SW 74th Ave.  
Miami, Florida 33155.  
Pho:786-388-1121  
Fax:786-388-1161



APPROVED BY:

A.B.

DATE:

7/08/08.

DRAWING DESCRIPTION:

ELEVATIONS.

PROJECT NO.  
1627

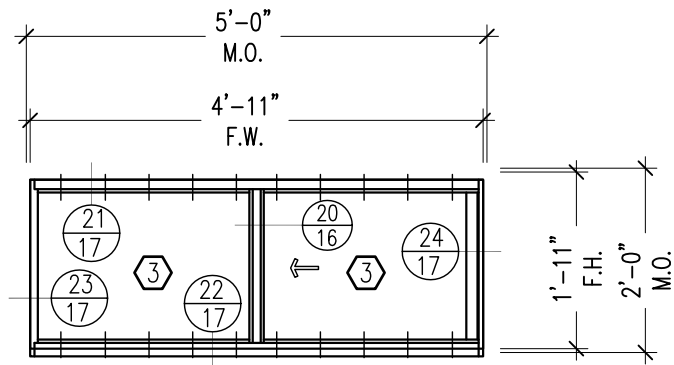
SHEET NO.  
05 of 19

REVISION

BY

DATE

NO.

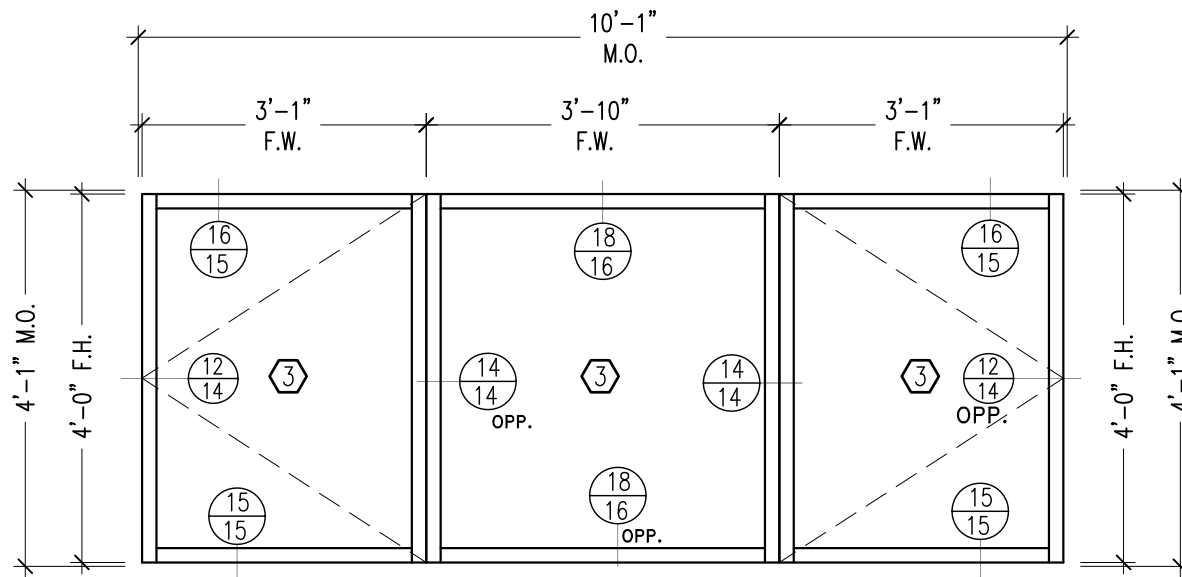


ELEVATION : W-102

QTY. = 1

WIND LOAD: +59.3 PSF  
-64.2 PSF

RC ALUMINUM HORIZONTAL ROLLER  
N.O.A. #06-1130.02  
HR 100 SERIES



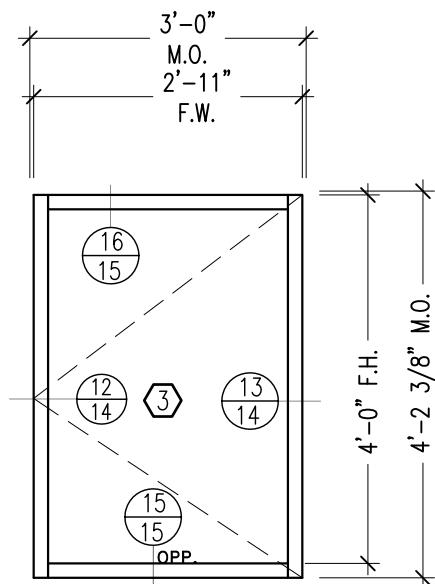
ELEVATION : W-103

W-203

WIND LOAD: +58.6 PSF  
-77.7 PSF

QTY. = 2

"RC ALUMINUM CASEMENT WINDOWS CM-100" N.O.A. #06-1130.01  
RC ALUMINUM FIXED WINDOW FX100 N.O.A. #05-0815.01

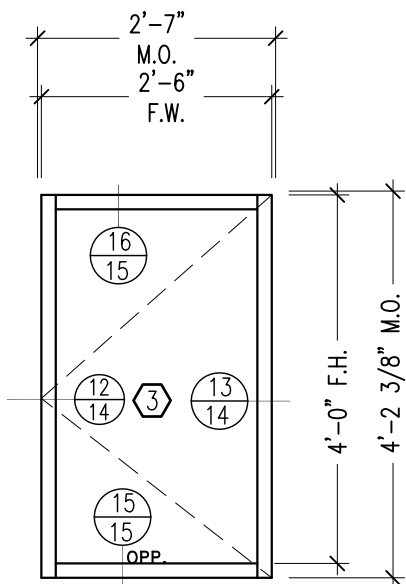


ELEVATION : W-209

QTY. = 1

WIND LOAD: +58.9 PSF  
-78.3 PSF

"RC ALUMINUM CASEMENT  
WINDOWS CM-100"  
N.O.A. #06-1130.01



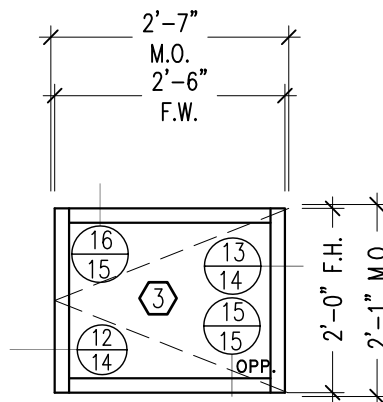
ELEVATION : W-206

W-207

QTY. = 2

WIND LOAD: +59.3 PSF  
-64.2 PSF

"RC ALUMINUM CASEMENT  
WINDOWS CM-100"  
N.O.A. #06-1130.01

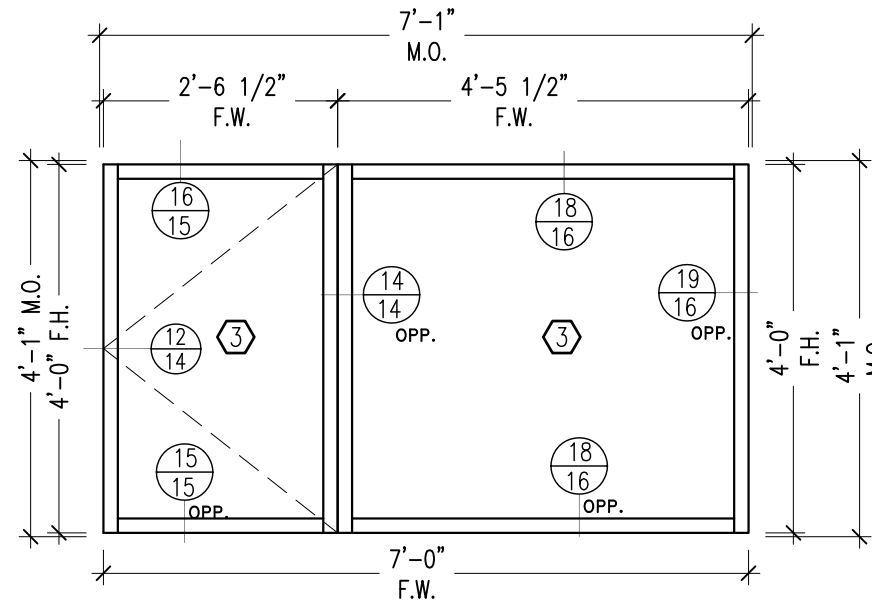


ELEVATION : W-105

QTY. = 1

WIND LOAD: +59.3 PSF  
-64.2 PSF

"RC ALUMINUM CASEMENT  
WINDOWS CM-100"  
N.O.A. #06-1130.01



ELEVATION : W-202

QTY. = 1

WIND LOAD: +59.3 PSF  
-79.0 PSF

RC ALUMINUM FIXED WINDOW FX100  
N.O.A. #05-0815.01

"RC ALUMINUM CASEMENT  
WINDOWS CM-100"  
N.O.A. #06-1130.01

NO. DATE BY REVISION

PROJECT NAME AND LOCATION:

"VILLA ONE"  
3110 SHERIDAN AVE.  
MIAMI BEACH, FLORIDA 33139.  
ARCHITECT:  
"KOBIKARP ARCHITECTURE AND INTERIOR DESIGN"  
2915 BISCAYNE BLVD, SUITE # 200  
MIAMI, FLORIDA 33137.

GLASSLAND INC  
4514 SW 74th Ave.  
Miami, Florida 33155.  
Pho: 786-388-1121  
Fax: 786-388-1161



APPROVED BY:

DRAWN BY: A.B.

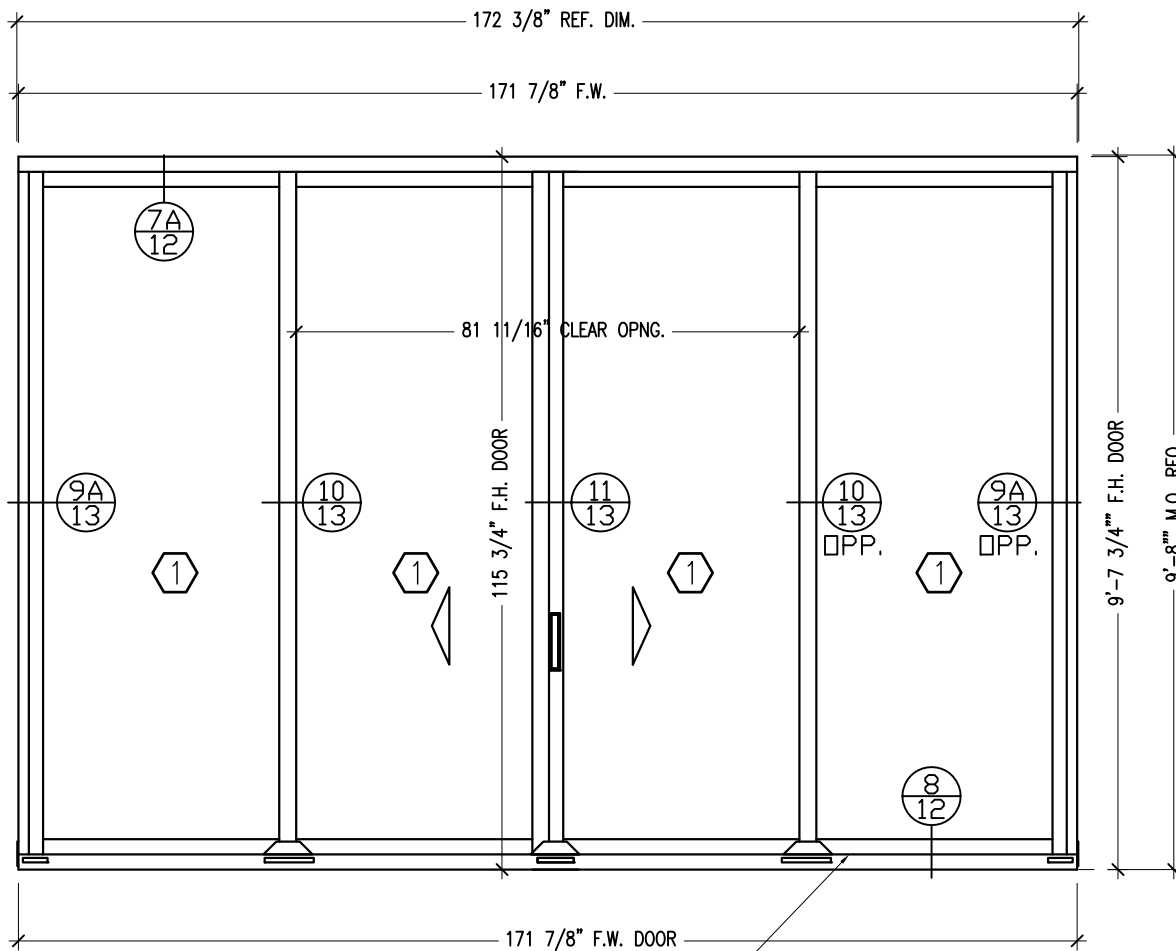
DATE: 7/08/08.

DRAWING DESCRIPTION:  
ELEVATIONS.

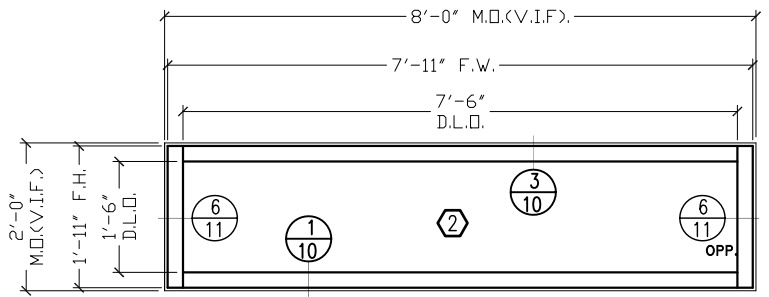
PROJECT NO.  
1627

SHEET NO.  
06 of 19

# ELEVATION : C



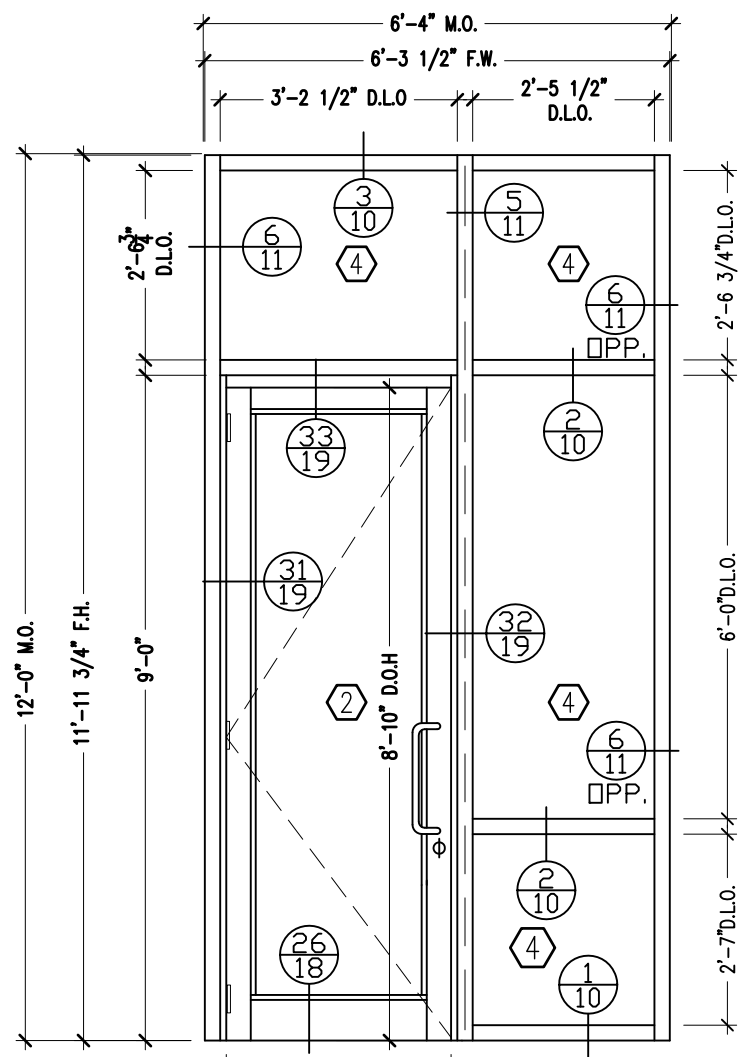
SLIDING DOOR : S1  
 SERIES 2400ST RC ALUMINUM S.G.D.  
 N.O.A. # 07-0124.08  
 QTY. = 1  
 WIND LOAD: +54.7 PSF  
 -59.6 PSF



ELEVATION: W-302  
 W-304  
 QTY:2  
 WIND LOAD: +57.5 PSF  
 -75.5 PSF  
**VISTAWALL**  
 "HR-250" ALUM. CURTAIN  
 WALL SYSTEM  
 N.O.A:05-1102.09

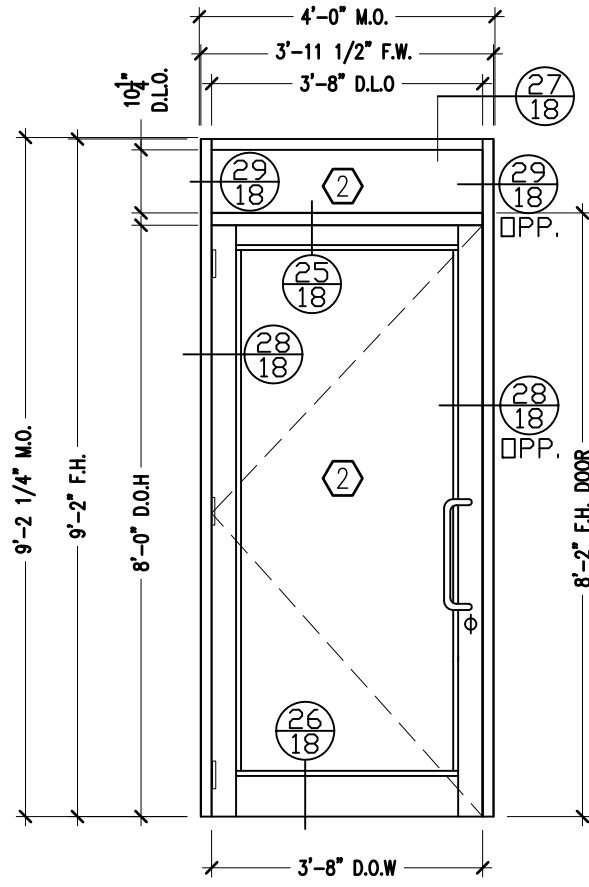
## ELEVATION: D-115

QTY. = 1  
**"DELTA DOORS MANUFAC. CO."**  
 DH-350 ALUM. OUTSWING DOOR.  
 N.O.A. 04-1123.01  
 LARGE & SMALL MISSILE IMPACT.  
 DOOR'S DESIGN PRESSURE +59.3 PSF  
 -64.2 PSF



ELEVATION: D-101  
 QTY. = 1  
**"DELTA DOORS MANUFAC. CO."**  
 DH-350 ALUM. OUTSWING DOOR.  
 N.O.A. 04-1123.01  
 LARGE & SMALL MISSILE IMPACT.

**VISTAWALL**  
 "HR-250" ALUM. CURTAIN  
 WALL SYSTEM  
 N.O.A:05-1102.09  
 DOOR'S DESIGN PRESSURE +59.3 PSF  
 -64.2 PSF



ELEVATION: D-301  
 QTY. = 1

**"DELTA DOORS MANUFAC. CO."**  
 DH-350 ALUM. OUTSWING DOOR.  
 N.O.A. 04-1123.01  
 LARGE & SMALL MISSILE IMPACT.  
 DOOR'S DESIGN PRESSURE +56.4 PSF  
 -73.4 PSF

NO.	DATE	BY	REVISION

PROJECT NAME AND LOCATION:  
 "VILLA ONE"  
 3110 SHERIDAN AVE.  
 MIAMI BEACH, FLORIDA 33139.

ARCHITECT:  
 "KOBIKARP ARCHITECTURE AND INTERIOR DESIGN"  
 2915 BISCAYNE BLVD, SUITE # 200  
 MIAMI, FLORIDA 33137.

**GLASSLAND INC**  
 4514 SW 74th Ave.  
 Miami, Florida 33155.  
 Pho: 786-388-1121  
 Fax: 786-388-1161



APPROVED BY:  
 DRAWN BY:  
 A.B.

DATE:  
 7/08/08.

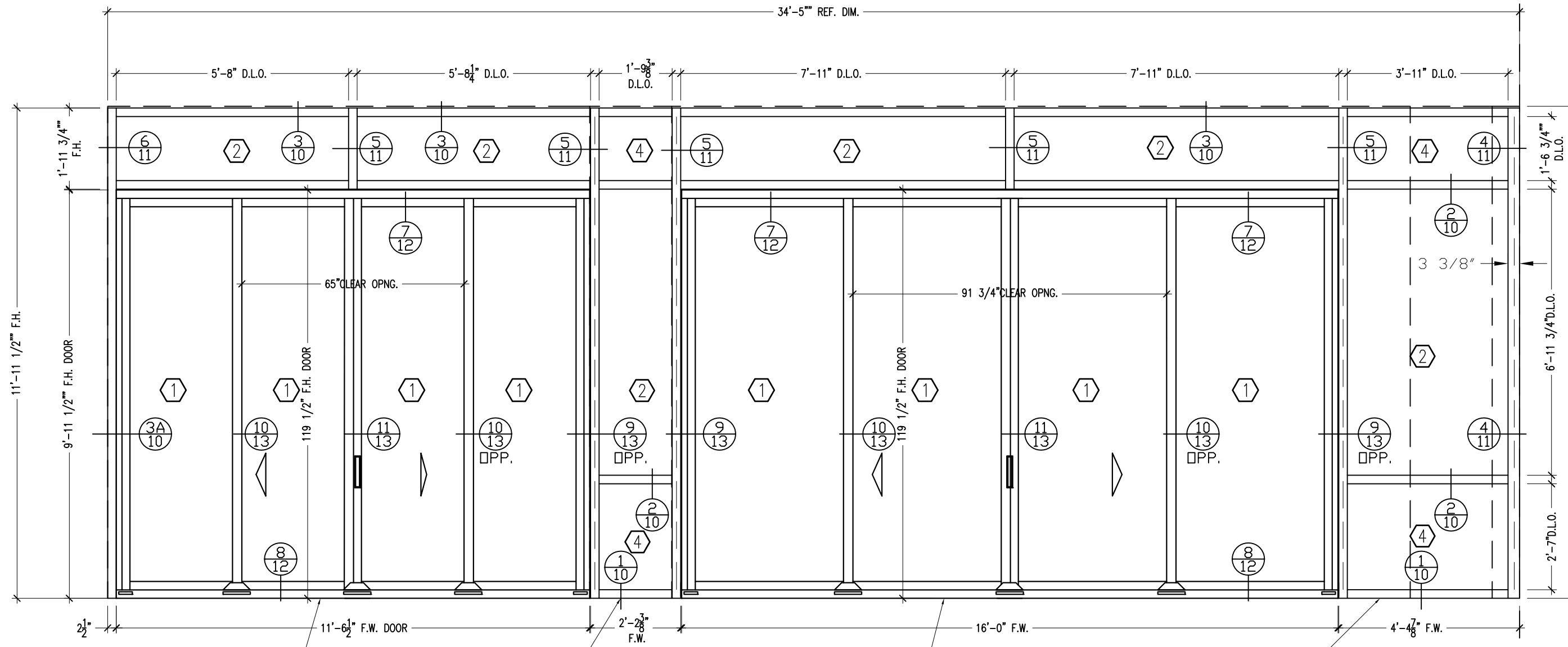
DRAWING DESCRIPTION:  
 ELEVATIONS.

PROJECT NO.  
 1627

SHEET NO.  
 07 of 19

# ELEVATION : A

LINE # 1



SLIDING DOOR : S3  
 SERIES 2400ST RC ALUMINUM S.G.D.  
 N.O.A. # 07-0124.08  
 QTY. = 2  
 WIND LOAD: +59.3 PSF  
 WIND LOAD: -79.0 PSF

W-3A  
 HR-250 VISTAWALL SYSTEM  
 N.O.A#05-1102.09  
 QTY. = 2  
 WIND LOAD: +59.3 PSF  
 WIND LOAD: -79.0 PSF

ELEVATION : S2  
 SERIES 2400ST RC ALUMINUM S.G.D.  
 N.O.A. # 07-0124.08  
 QTY. = 2  
 WIND LOAD: +59.3 PSF  
 WIND LOAD: -79.0 PSF

W-2A  
 HR-250 VISTAWALL SYSTEM  
 N.O.A#05-1102.09  
 QTY. = 2  
 WIND LOAD: +59.3 PSF  
 WIND LOAD: -79.0 PSF

NO. DATE BY REVISION

PROJECT NAME AND LOCATION:

"VILLA ONE"  
 3110 SHERIDAN AVE.  
 MIAMI BEACH, FLORIDA 33139.  
**ARCHITECT:**  
 "KOBICKARP ARCHITECTURE AND INTERIOR DESIGN"  
 2915 BISCAYNE BLVD, SUITE # 200  
 MIAMI, FLORIDA 33137.

**GLASSLAND INC.**  
 4514 SW 74th Ave.  
 Miami, Florida 33155.  
 Phone: 786-388-1121  
 Fax: 786-388-1161



APPROVED BY:

DATE:

DRAWING DESCRIPTION:  
 ELEVATIONS.

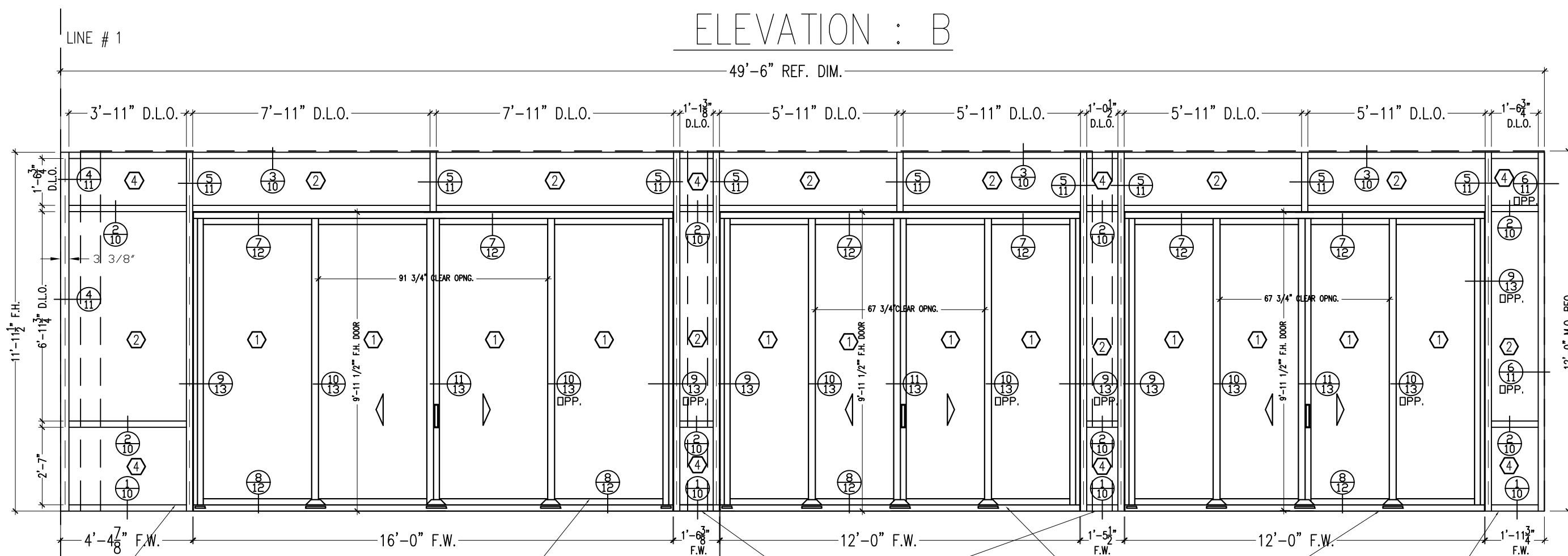
PROJECT NO.  
 1627

SHEET NO.  
 08 of 19



# ELEVATION : B

49'-6" REF. DIM.



**W-2B**  
 HR-250 VISTAWALL SYSTEM  
 N.O.A#05-1102.09  
 QTY. = 2  
 WIND LOAD: +59.3 PSF  
 -79.0 PSF

**ELEVATION : S2**  
 SERIES 2400ST RC ALUMINUM S.G.D.  
 N.O.A. # 07-0124.08  
 QTY. = 2  
 WIND LOAD: +59.3 PSF  
 -79.0 PSF

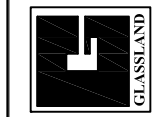
**W-3B**  
 HR-250 VISTAWALL SYSTEM  
 N.O.A#05-1102.09  
 QTY. = 4  
 WIND LOAD: +59.3 PSF  
 -79.0 PSF

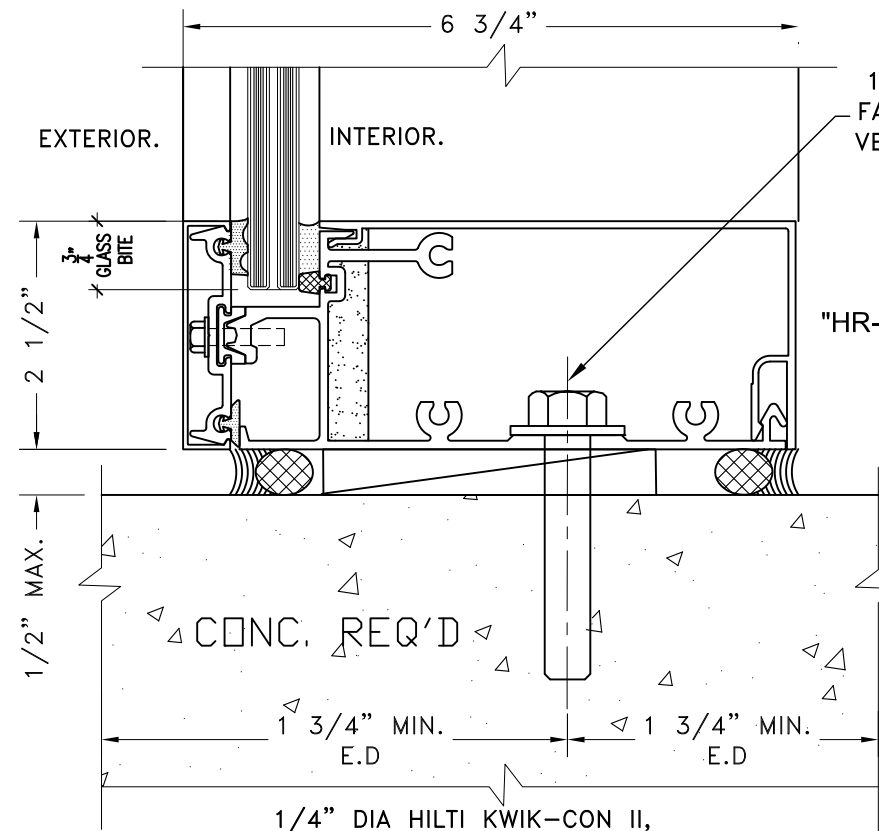
**SLIDING DOOR : S3**  
 SERIES 2400ST RC ALUMINUM S.G.D.  
 N.O.A. # 07-0124.08  
 QTY. = 4  
 WIND LOAD: +59.3 PSF  
 -79.0 PSF

**W-4B**  
 HR-250 VISTAWALL SYSTEM  
 N.O.A#05-1102.09  
 QTY. = 2  
 WIND LOAD: +59.3 PSF  
 -79.0 PSF

PROJECT NAME AND LOCATION:		"VILLA ONE" 3110 SHERIDAN AVE. MIAMI BEACH, FLORIDA 33139.	
ARCHITECT:		"KOBICKAR ARCHITECTURE AND INTERIOR DESIGN" 2915 BISCAYNE BLVD, SUITE # 200 MIAMI, FLORIDA 33137.	
APPROVED BY:	DATE:	REVISION	BY
DRAWN BY:	DATE:	NO.	DATE
A.B.	7/08/08.		
DRAWING DESCRIPTION:			
ELEVATIONS.			
PROJECT NO.		1627	
SHEET NO.		09 of 19	

**GLASSLAND INC**  
 4514 SW 74th Ave.  
 Miami, Florida 33155.  
 Pto: 786-388-1121  
 Fax: 786-388-1161

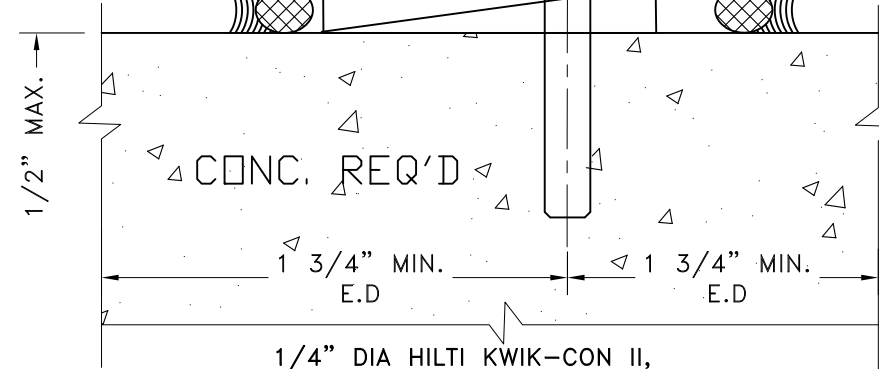




1/2"x4" WEDGE BOLT BY POWER FASTENERS @ 4" FROM JAMB AND VERTICAL FACES W/ 3 1/2" MIN. EMBEDMENT.

**DETAIL-1**  
**VISTAWALL**

"HR-250" CURTAIN WALL SYSTEM..  
N.O.A.# 05-1102.09.

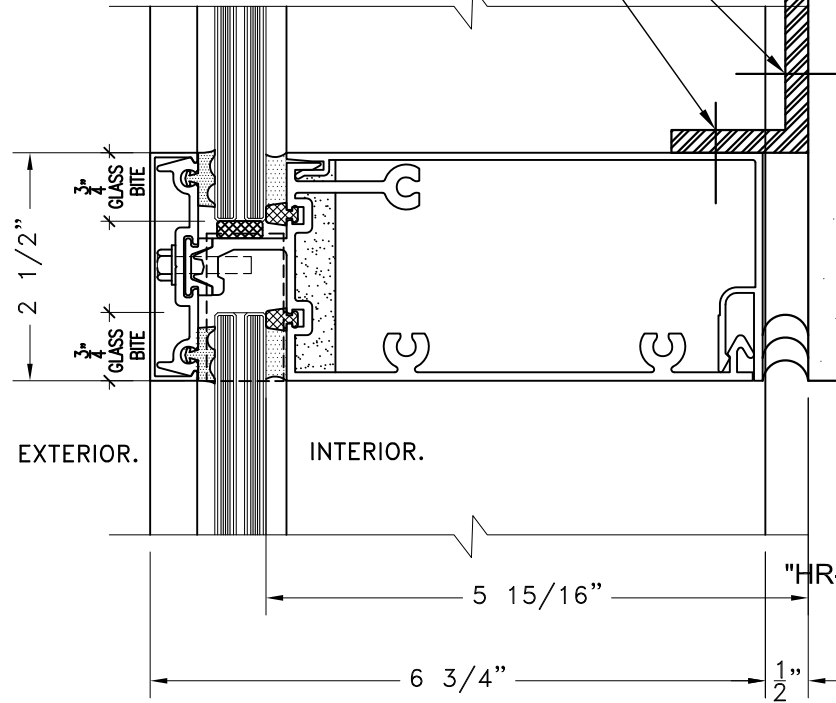


**DETAIL-3**  
**VISTAWALL**

"HR-250" CURTAIN WALL SYSTEM..  
N.O.A.# 05-1102.09.

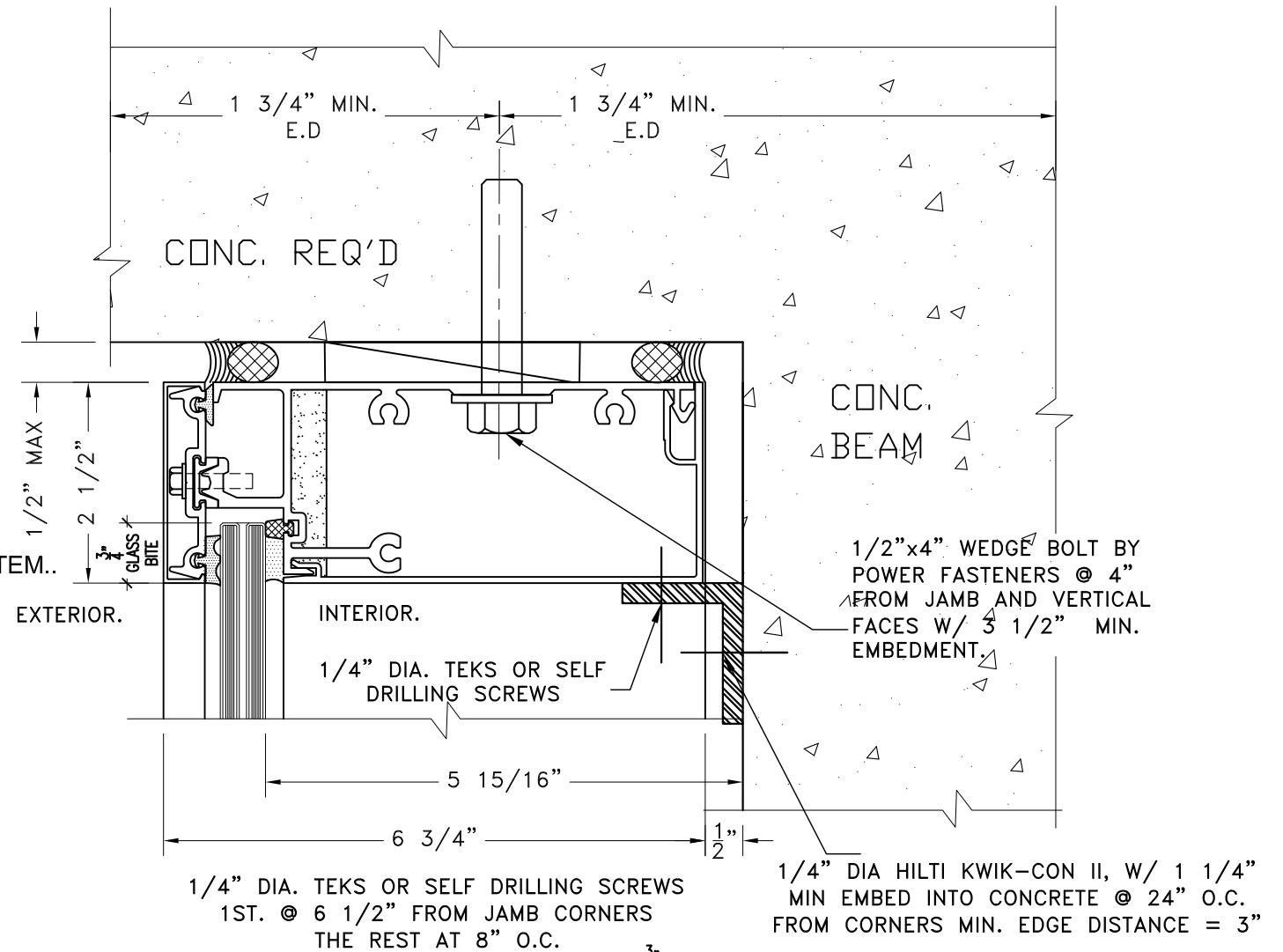
1/4" DIA HILTI KWIK-CON II,  
W/ 1 1/4"  
MIN EMBED INTO CONCRETE MIN.  
EDGE DISTANCE = 3"

1/4" DIA. TEKS OR SELF  
DRILLING SCREWS



**DETAIL-2**  
**VISTAWALL**

"HR-250" CURTAIN WALL SYSTEM..  
N.O.A.# 05-1102.09.

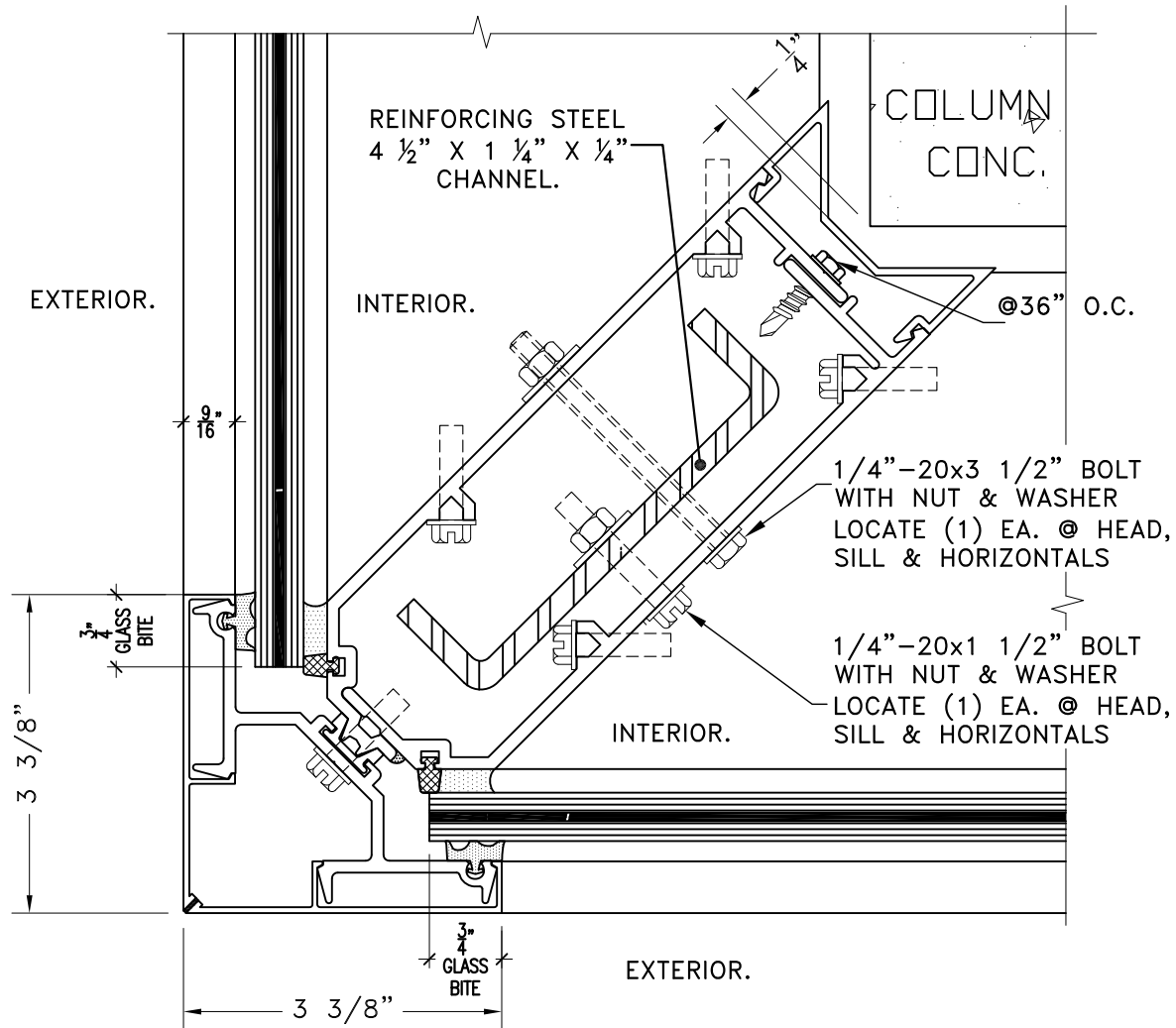


**DETAIL-3A**  
**VISTAWALL**

"HR-250" CURTAIN WALL SYSTEM..  
N.O.A.# 05-1102.09.

**R.C. ALUMINUM INDUSTRIES**  
SERIES "2400ST" ALUM. SLIDING DOOR  
N.O.A.# 07-0124.08

PROJECT NAME AND LOCATION:	"VILLA OVI" 3110 SHERIDAN AVE. MIAMI BEACH, FLORIDA 33139.		
ARCHITECT:	"KOBICKI" ARCHITECTURE AND INTERIOR DESIGN." 2915 BISCAYNE BLVD SUITE # 200 MIAMI, FLORIDA 33137.		
NO.	DATE	BY	REVISION
<p><b>GLASSLAND INC</b> 4514 SW. 74th Ave. Miami Florida 33155. Pho: 786-388-1121 Fax: 786-388-1161</p>			
DRAWN BY:	APPROVED BY:	DATE:	DRAWING DISCRPTION:
A.B.		7/08/08.	DETAILS.
PROJECT NO.		1627	
SHEET NO.		10 of 19	



**DETAIL-4**  
**VISTAWALL**

"HR-250" CURTAIN WALL SYSTEM..  
N.O.A.# 05-1102.09.

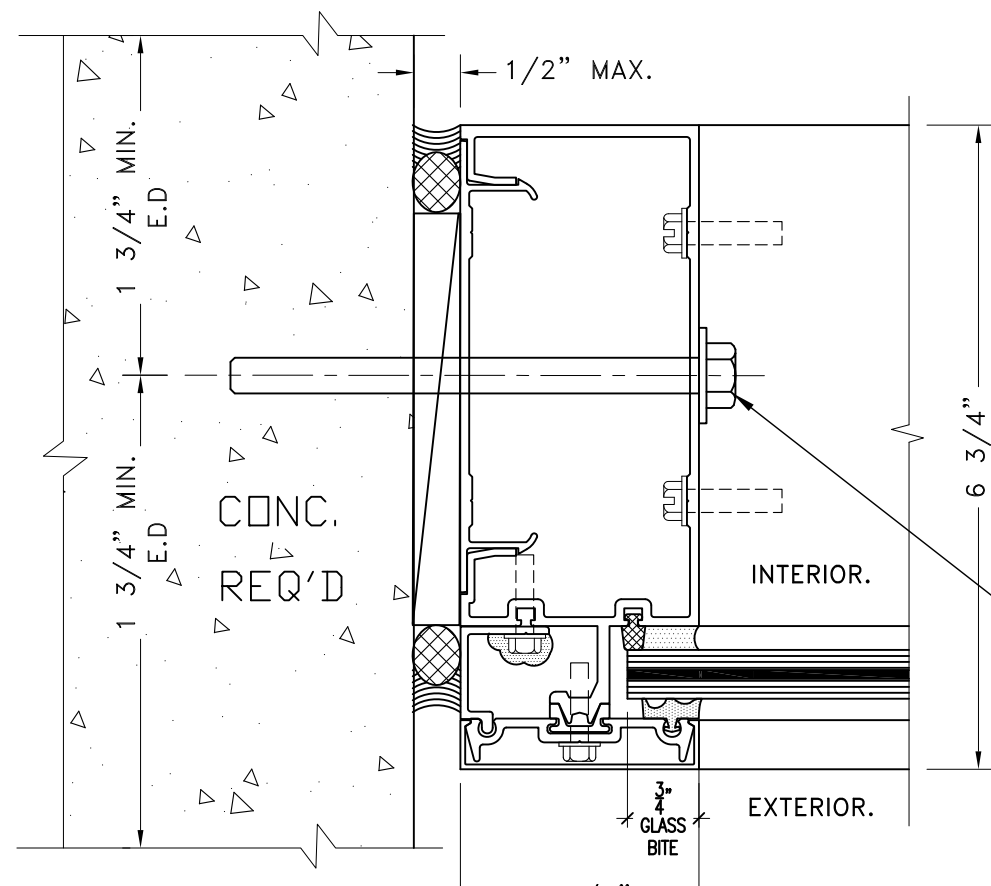
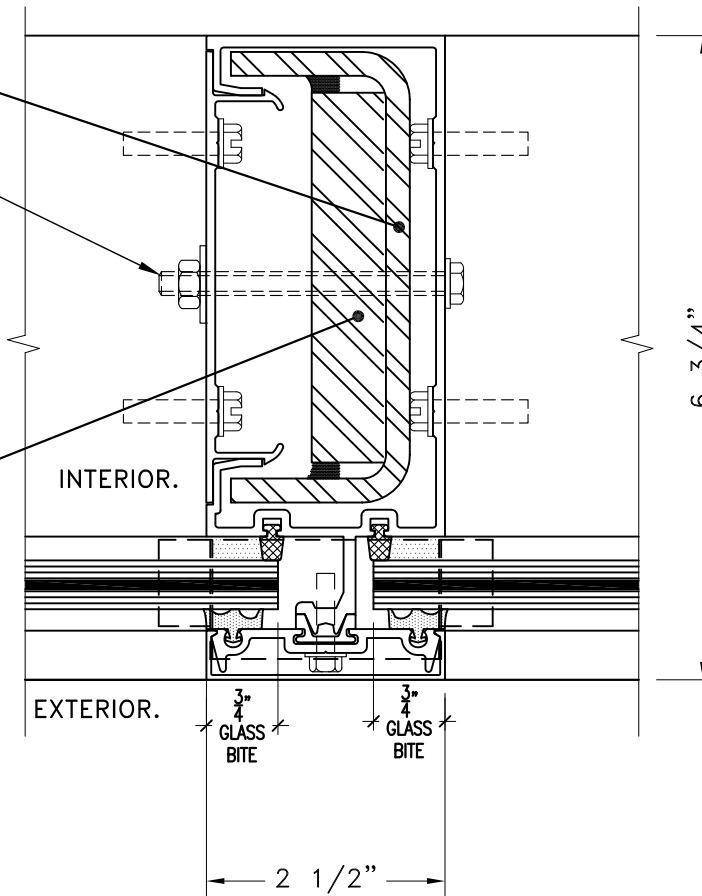
4-11/16" X 1-7/8"  
X 1/4" ASTM-A36 STEEL  
REINFORCEMENT,  
SEE TO ELEVATION TO BE USED.

1/4"-20 X 3 1/2" BOLT  
WITH WASHER & NUT  
LOCATE (1) EACH HEAD  
HORIZONTAL & SILL.

CONT. 3/4" X 4" ASTM A-36  
STEEL BAR.  
SEE TO ELEVATION TO BE USED.

**DETAIL-5**  
**VISTAWALL**

"HR-250" CURTAIN WALL SYSTEM..  
N.O.A.# 05-1102.09.



**DETAIL-6**  
**VISTAWALL**

"HR-250" CURTAIN WALL SYSTEM..  
N.O.A.# 05-1102.09.

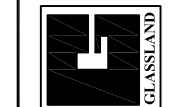
3/8"X5" WEDGE BOLT W/ 3 1/2"  
MIN EMBEDMENT INTO CONCRETE  
TYPICAL @ CENTER-LINE OF EACH  
HORIZONTAL.

REVISION  
BY  
DATE  
NO.

PROJECT NAME AND LOCATION:

"VILLA OVI"  
3110 SHERIDAN AVE.  
MIAMI BEACH, FLORIDA 33139.  
ARCHITECT:  
"KOBICKI" ARCHITECTURE AND INTERIOR DESIGN."  
2915 BISCAYNE BLVD SUITE # 200  
MIAMI, FLORIDA 33137.

**GLASSLAND INC**  
4514 SW. 74th Ave.  
Miami Florida 33155.  
Pho: 786-388-1121  
Fax: 786-388-1161



APPROVED BY:

DATE: 7/08/08.  
DRAWING DISCRPTION:  
DETAILS.

PROJECT NO.  
1627

SHEET NO.  
11 of 19

### DETAIL-7

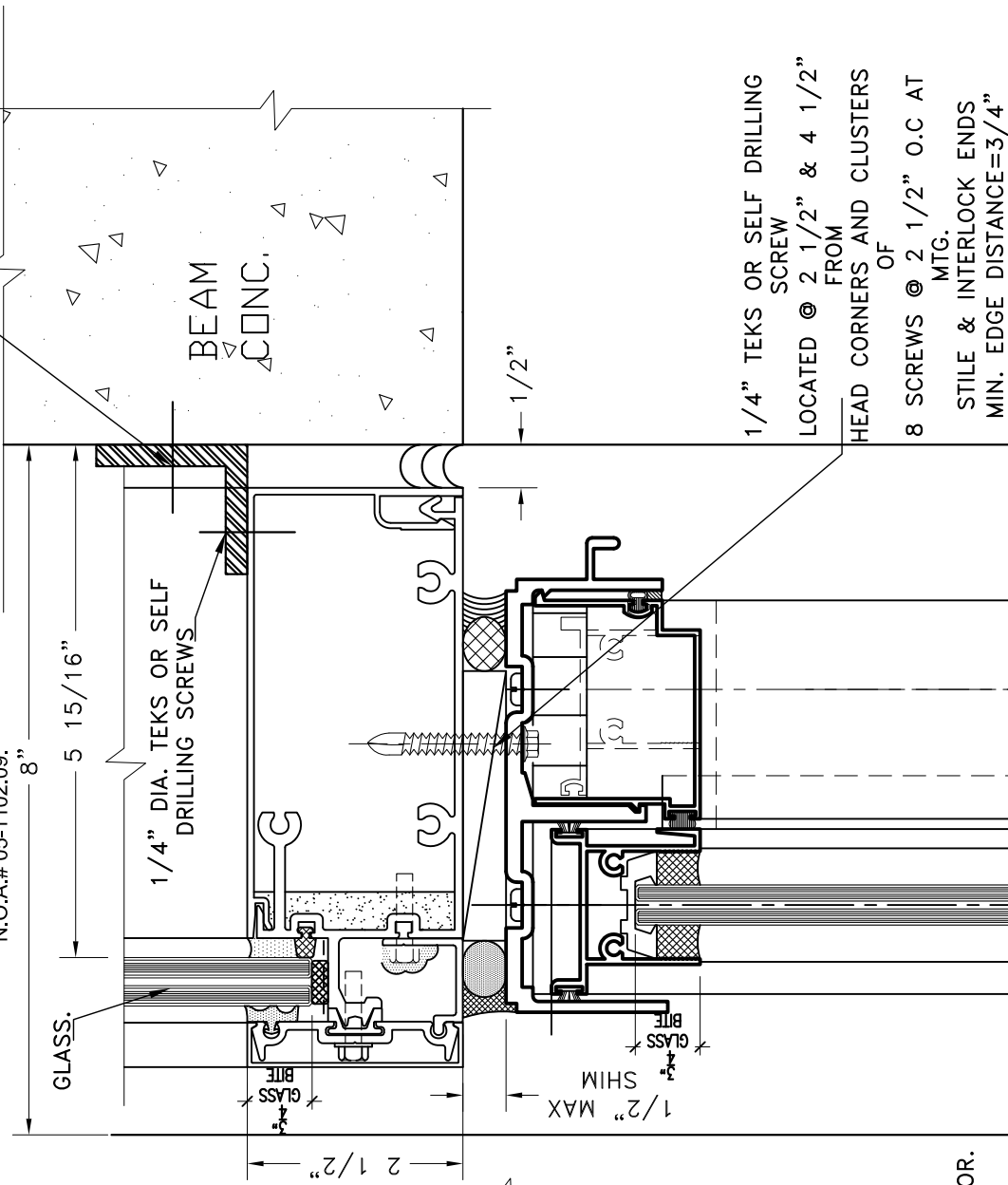
R.C. ALUMINUM INDUSTRIES  
SERIES "2400ST" ALUM. SLIDING DOOR  
N.O.A.# 07-0124.08

1/4" DIA HILTI KWIK-CON II, W/ 1 1/4"  
MIN EMBED INTO CONCRETE @ 24" O.C.  
FROM CORNERS MIN. EDGE DISTANCE = 3"

### VISTAWALL

"HR-250" CURTAIN WALL SYSTEM..

N.O.A.# 05-1102.09.

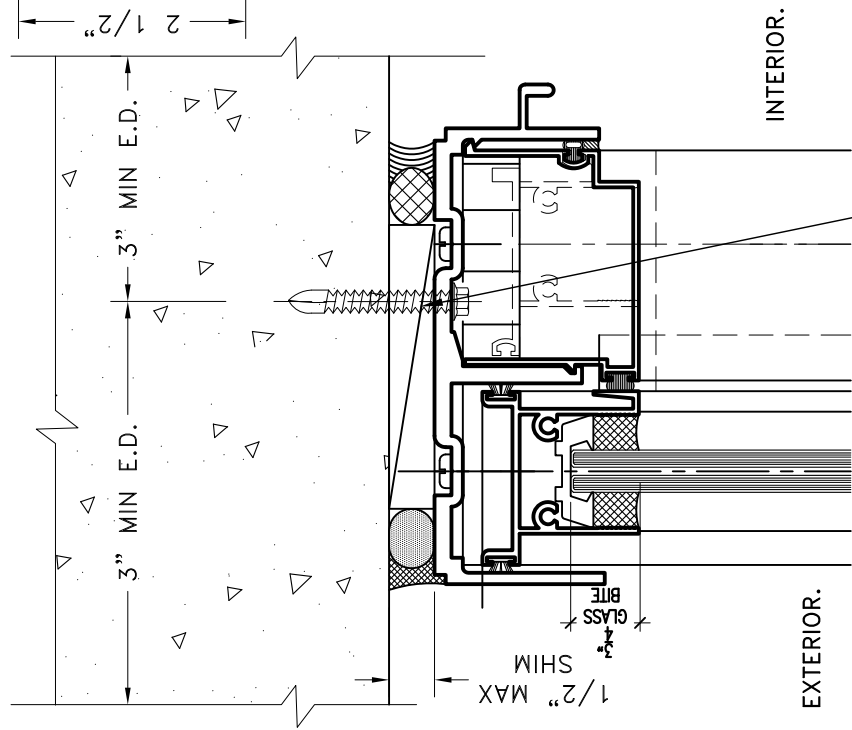


1/4" TEKS OR SELF DRILLING  
SCREW  
LOCATED @ 2 1/2" & 4 1/2"  
FROM  
HEAD CORNERS AND CLUSTERS  
OF  
8 SCREWS @ 2 1/2" O.C AT  
MTG.  
STILE & INTERLOCK ENDS  
MIN. EDGE DISTANCE=3/4"

1/4" DIA HILTI KWIK-CON  
II, W/ 1 1/4"  
MIN EMBED INTO CONCRETE  
LOCATED @  
2 1/2" & 4 1/2" FROM  
SILL CORNERS  
AND CLUSTERS OF 4  
SCREWS @ 2 1/2"  
O.C AT MTG. STILE &  
INTERLOCK ENDS  
MIN. EDGE DISTANCE = 3"

### DETAIL-7A

R.C. ALUMINUM INDUSTRIES  
SERIES "2400ST" ALUM. SLIDING DOOR  
N.O.A.# 07-0124.08



1/4" DIA HILTI KWIK-CON II, W/ 1 1/4"  
MIN EMBED INTO CONCRETE LOCATED @  
2 1/2" & 4 1/2" FROM SILL CORNERS  
AND CLUSTERS OF 8 SCREWS @ 2 1/2"  
O.C AT MTG. STILE & INTERLOCK ENDS  
MIN. EDGE DISTANCE = 3"

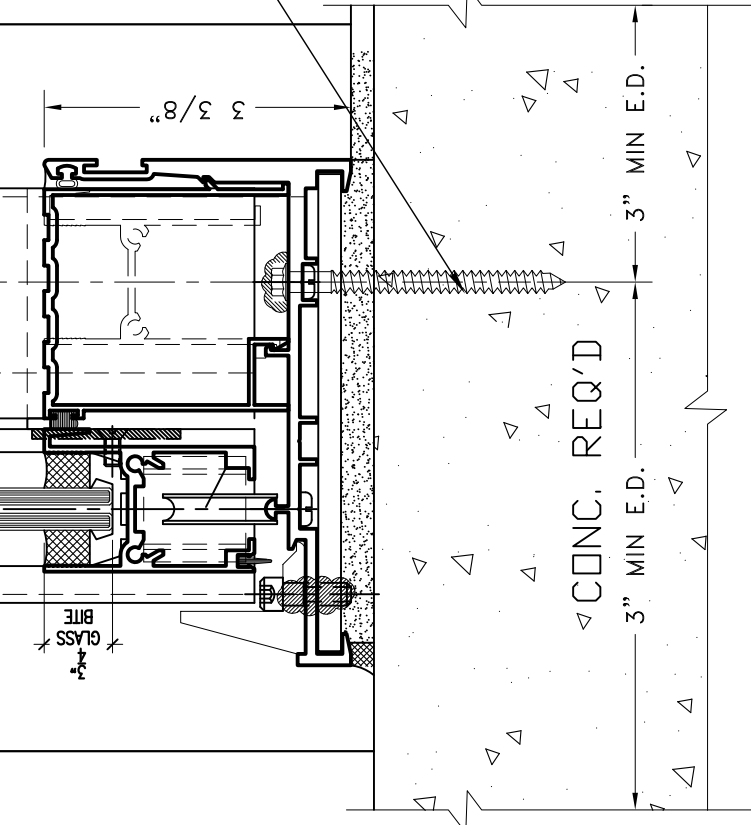
### DETAIL-8

R.C. ALUMINUM INDUSTRIES  
SERIES "2400ST" ALUM. SLIDING DOOR  
N.O.A.# 07-0124.08

### VISTAWALL

"HR-250" CURTAIN WALL SYSTEM..

N.O.A.# 05-1102.09.



CONC. REQ'D  
3" MIN E.D.  
3" MIN E.D.

SHEET NO.  
12 of 19

PROJECT NO.  
1627

DRAWING DISCUSSION:  
DETAILS.

DATE:  
7/08/08.

APPROVED BY:  
A.B.



GLASSLAND INC  
4514 SW. 74th Ave.  
Miami Florida 33155.  
Pho:786-388-1121  
Fax:786-388-1161

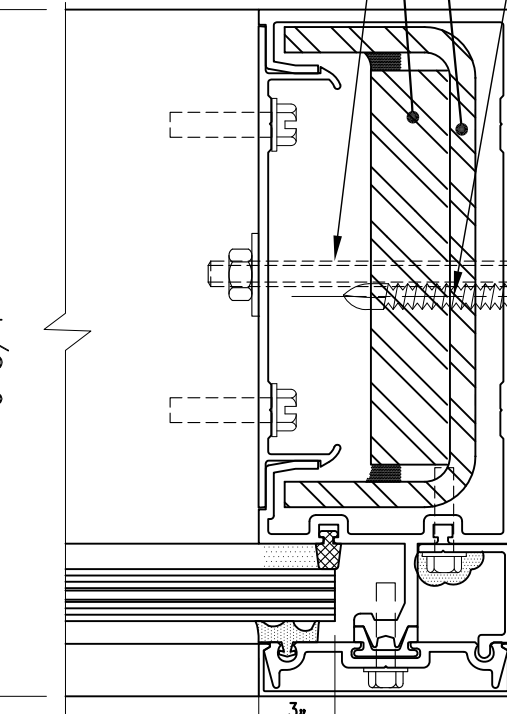
PROJECT NAME AND LOCATION:  
"VILLA OW"  
3110 SHERIDAN AVE.  
MIAMI BEACH, FLORIDA 33139.  
ARCHITECT:  
"KOBIKARP ARCHITECTURE AND INTERIOR DESIGN."  
2915 BISCAYNE BLVD. SUITE # 200  
MIAMI, FLORIDA 33137.

NO. DATE BY REVISION

1/4" DIA. TEKS OR SELF DRILLING SCREWS  
1ST. @ 6 1/2" FROM JAMB CORNERS  
THE REST AT 8" O.C.

4-11/16" X 1-7/8"  
X 1/4" ASTM-A36 STEEL  
REINFORCEMENT.

CONT. 3/4" X 4"  
ASTM A-36 STEEL BAR.

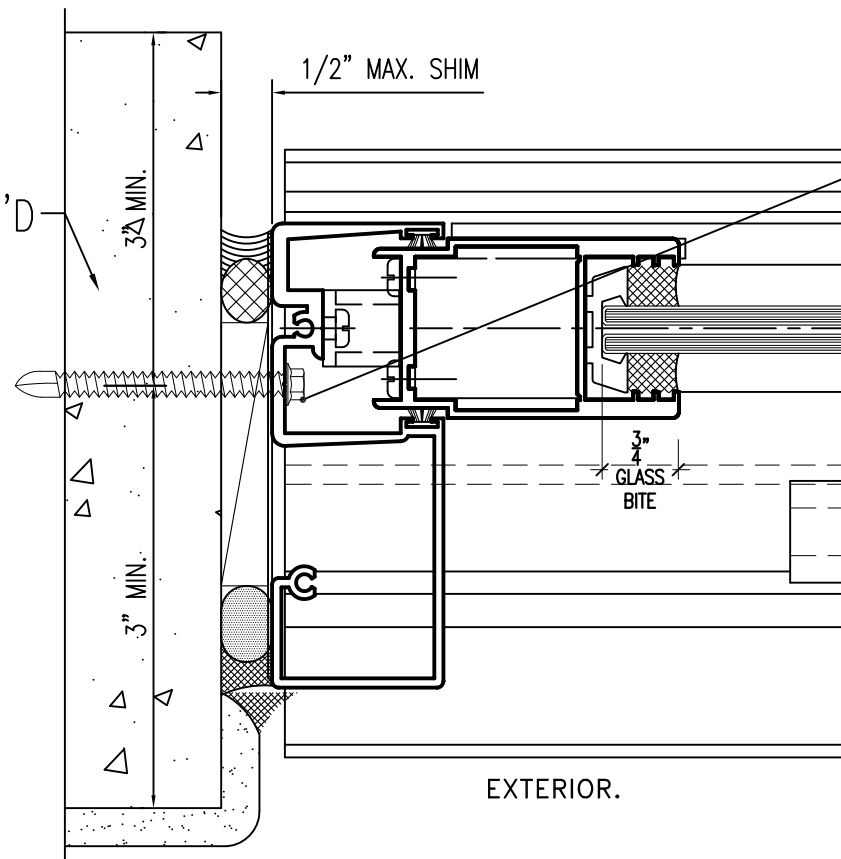


**DETAIL-9**

R.C. ALUMINUM INDUSTRIES  
SERIES "2400ST" ALUM. SLIDING DOOR  
N.O.A.# 07-0124.08

VISTAWALL  
"HR-250" CURTAIN WALL SYSTEM..  
N.O.A.# 05-1102.09.

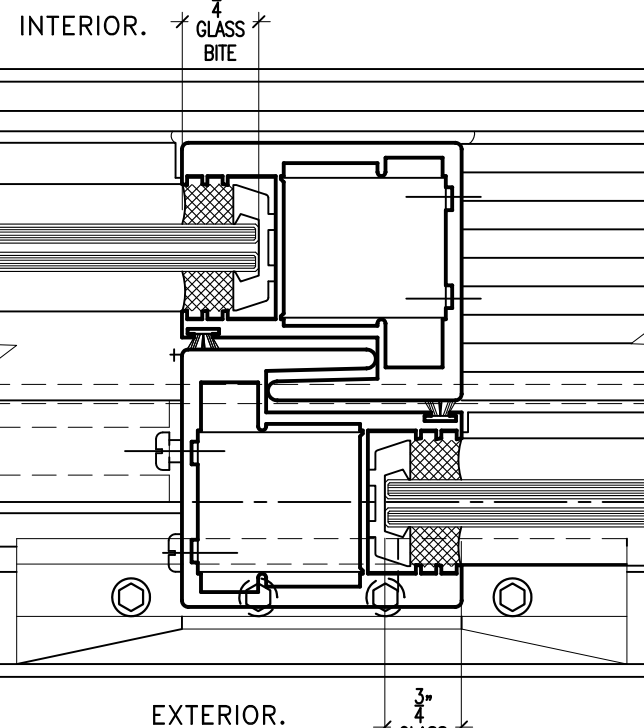
CONCRETE REQ'D



1/4" DIA. HILTI KWIK-CON II WITH  
1 1/4" MIN EMBED INTO CONCRETE  
1ST. @ 6 1/2" FROM JAMB CORNERS  
THE REST AT 8" O.C. MINIMUM EDGE  
DISTANCE = 3"

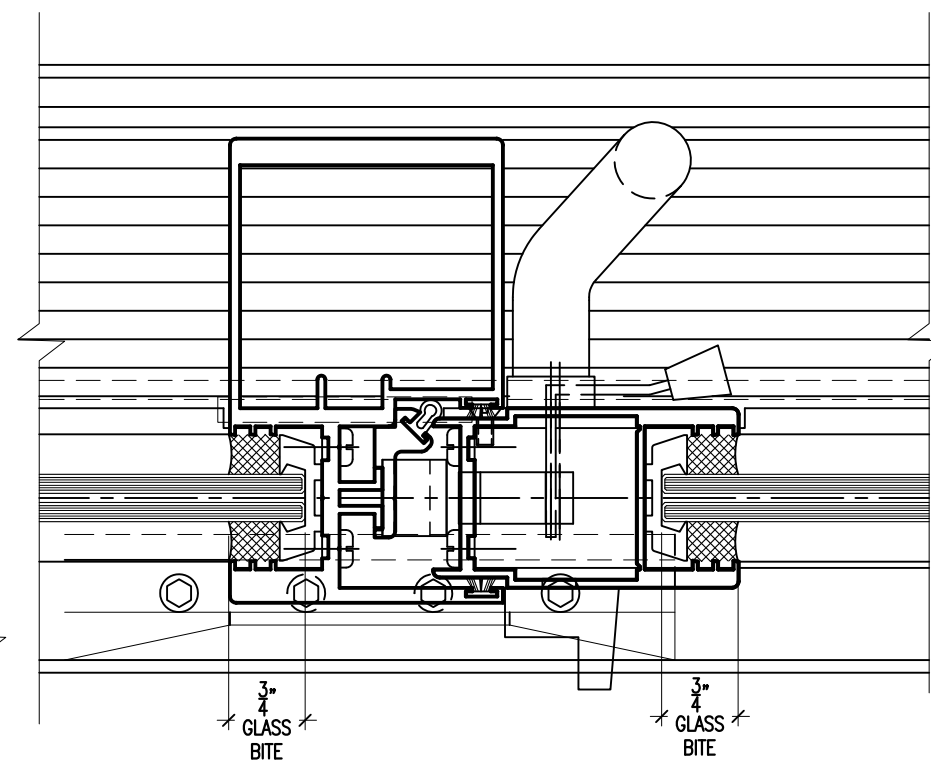
**DETAIL-9A**

R.C. ALUMINUM INDUSTRIES  
SYSTEM: "2400 ST"  
N.O.A. # 07-0124.08



**DETAIL-10**

R.C. ALUMINUM INDUSTRIES  
SERIES "2400ST" ALUM. SLIDING DOOR  
N.O.A.# 07-0124.08

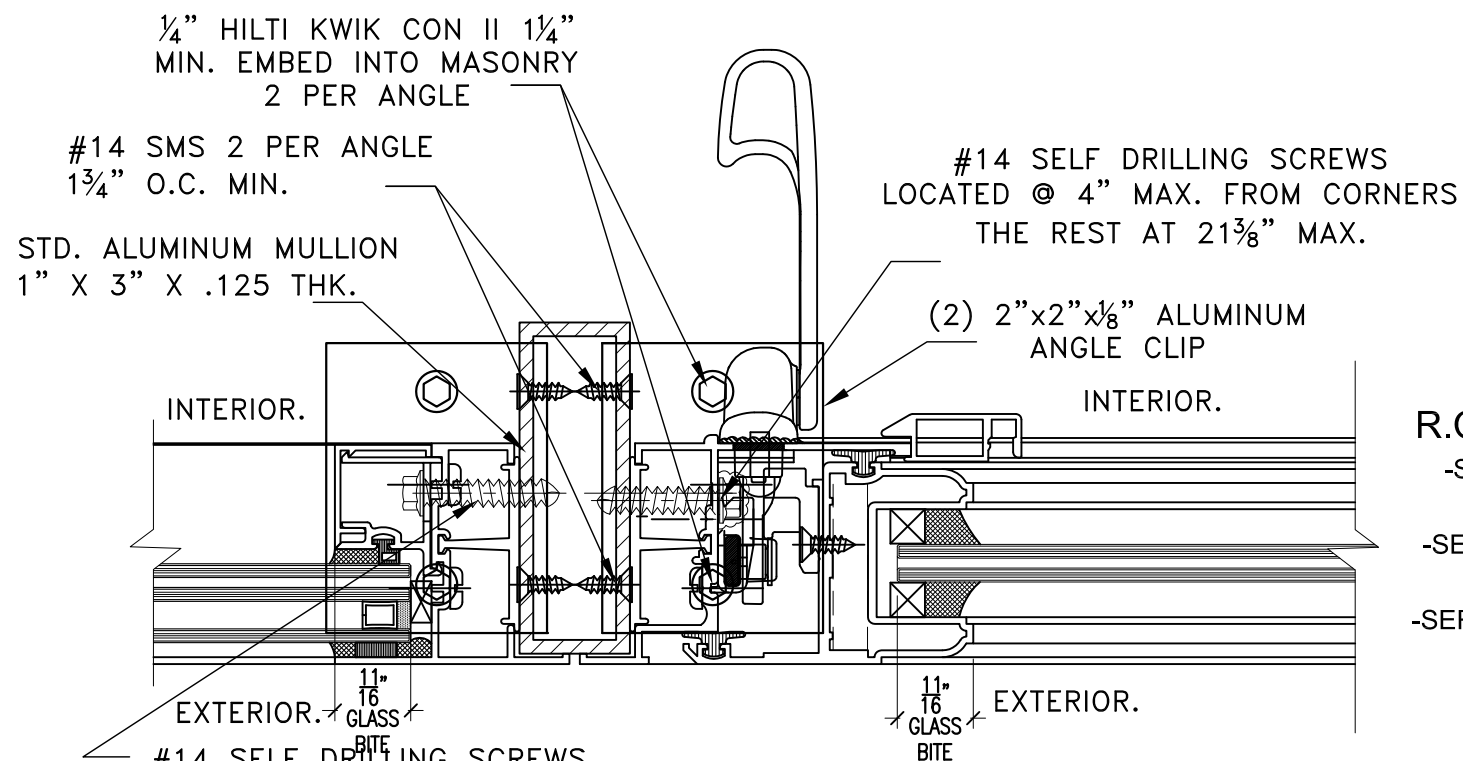


**DETAIL-11**

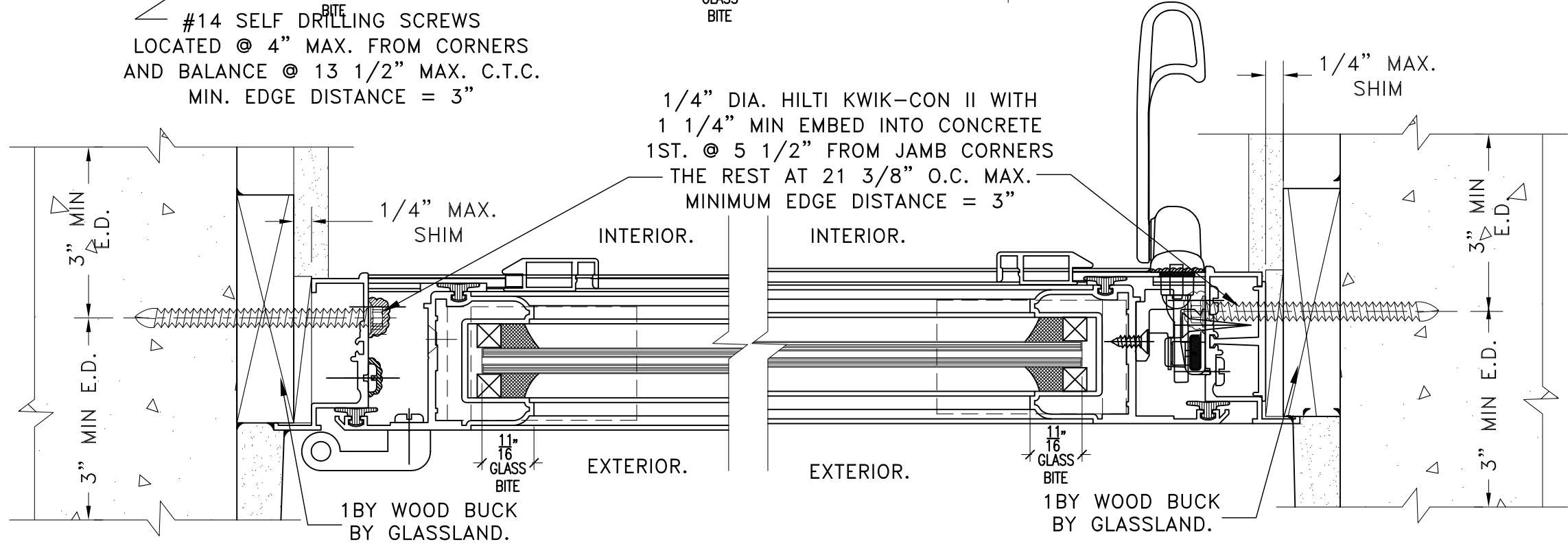
R.C. ALUMINUM INDUSTRIES  
SERIES "2400ST" ALUM. SLIDING DOOR  
N.O.A.# 07-0124.08

PROJECT NAME AND LOCATION:	"VILLA OVI" 3110 SHERIDAN AVE. MIAMI BEACH, FLORIDA 33139.
ARCHITECT:	"KOBUS&P" ARCHITECTURE AND INTERIOR DESIGN." 2915 BISCAYNE BLVD SUITE # 200 MIAMI, FLORIDA 33137.
APPROVED BY:	
DATE:	
DRAWN BY:	A.B.
DATE:	7/08/08.
DRAWING DESCRIPTION:	DETAILS.
PROJECT NO.	1627
SHEET NO.	13 of 19

**GLASSLAND INC**  
4514 SW. 74th Ave.  
Miami Florida 33155.  
Pho:786-388-1121  
Fax:786-388-1161



**DETAIL-14**  
**R.C. ALUMINUM INDUSTRIES**  
 -SERIES "CM100" ALUM. CASEMENT  
 N.O.A.# 06-1130.01  
 -SERIES "ML100" ALUM. TUBE MULLION  
 N.O.A.# 04-0608.05.  
 -SERIES "FX100" ALUM. FIXED WINDOWS  
 N.O.A.# 05-0815.01

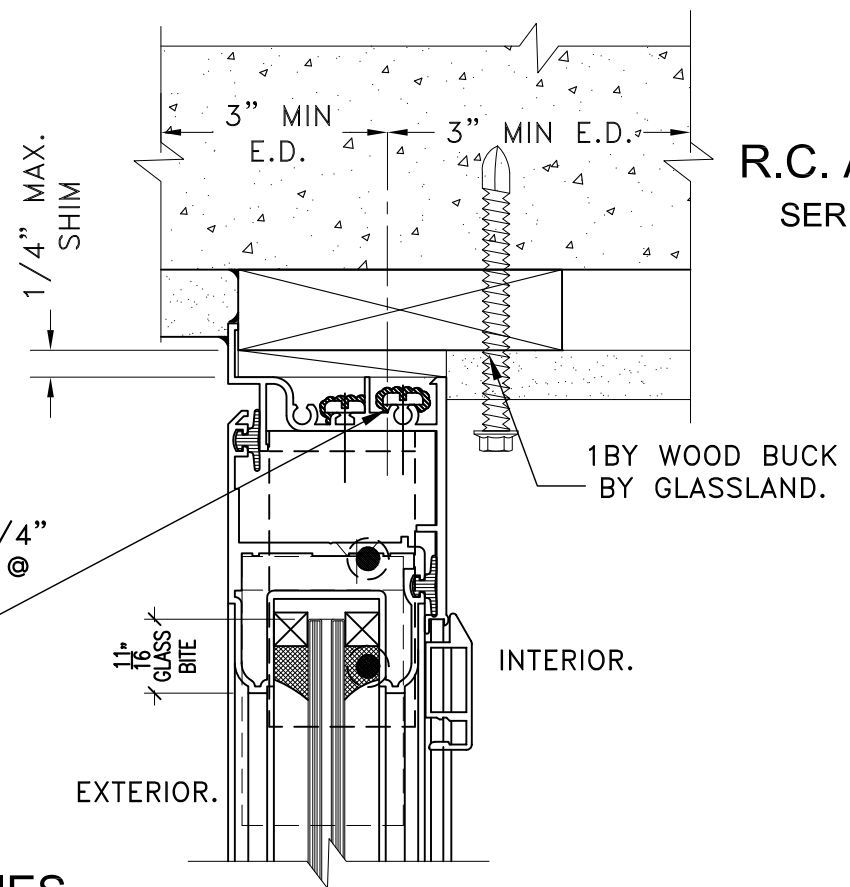


**DETAIL-12**  
**R.C. ALUMINUM INDUSTRIES**  
 SERIES "CM100" ALUM. CASEMENT  
 N.O.A.# 06-1130.01

**DETAIL-13**  
**R.C. ALUMINUM INDUSTRIES**  
 SERIES "CM100" ALUM. CASEMENT  
 N.O.A.# 06-1130.01

PROJECT NAME AND LOCATION: "VILLA OM" 3110 SHERIDAN AVE. MIAMI BEACH, FLORIDA 33139.		REVISION
ARCHITECT: "KOBUS&P" ARCHITECTURE AND INTERIOR DESIGN, 2915 BISCAYNE BLVD SUITE # 200 MIAMI, FLORIDA 33137.		BY
GLASSLAND INC 4514 SW. 74th Ave. Miami Florida 33155. Pho:786-388-1121 Fax:786-388-1161		DATE
APPROVED BY: A.B.		NO.
DATE: 7/08/08.	DRAWING DISCRPTION: DETAILS.	
PROJECT NO. 1627		
SHEET NO. 14 of 19		

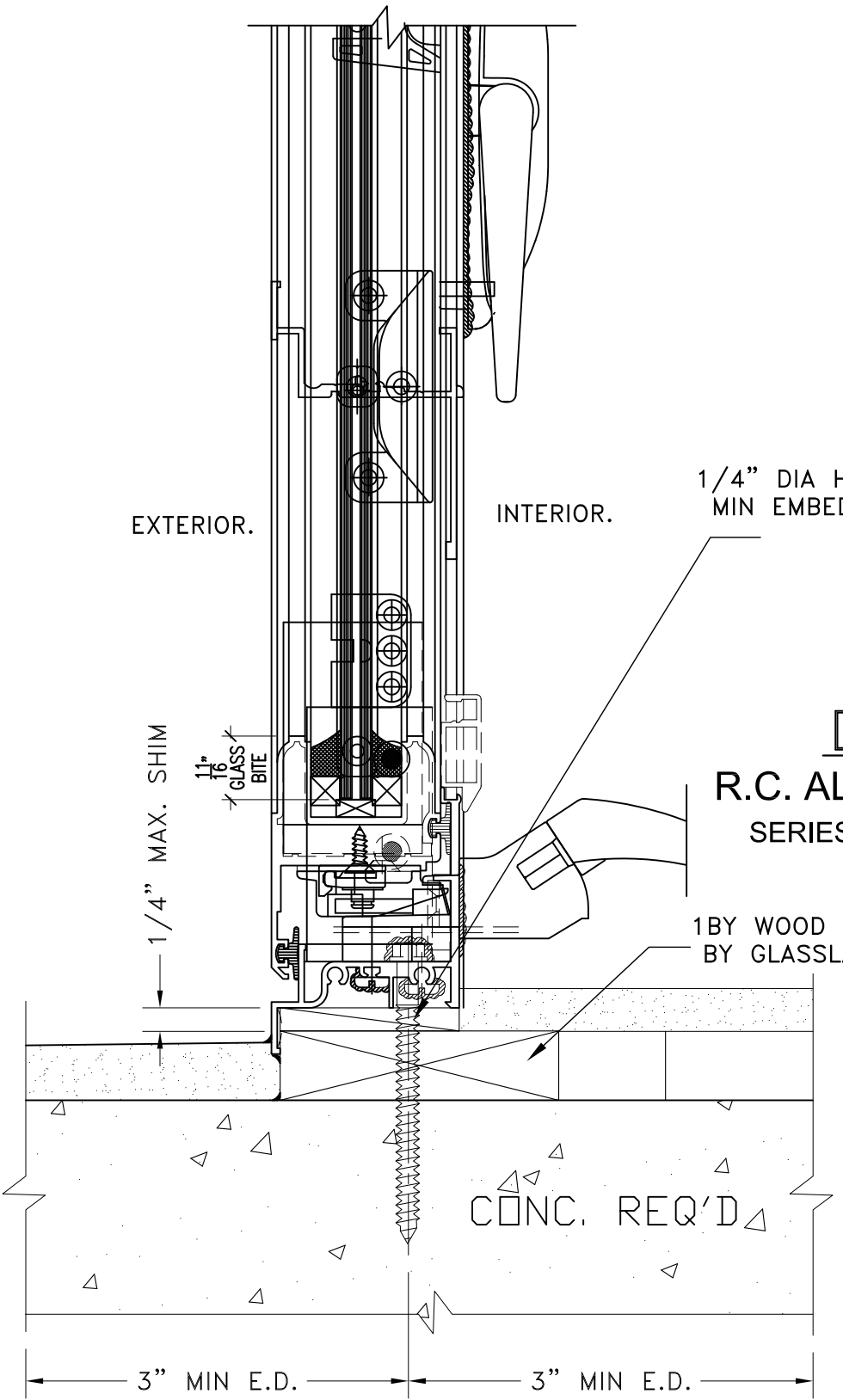
**DETAIL-16**  
**R.C. ALUMINUM INDUSTRIES**  
 SERIES "CM100" ALUM. CASEMENT  
 N.O.A.# 06-1130.01



1/4" DIA HILTI KWIK-CON II, W/ 1 1/4" MIN EMBED INTO CONCRETE LOCATED @ 8 5/8" FROM HEAD & SILL CORNERS

1BY WOOD BUCK BY GLASSLAND.

**DETAIL-15**  
**R.C. ALUMINUM INDUSTRIES**  
 SERIES "CM100" ALUM. CASEMENT  
 N.O.A.# 06-1130.01



1BY WOOD BUCK BY GLASSLAND.

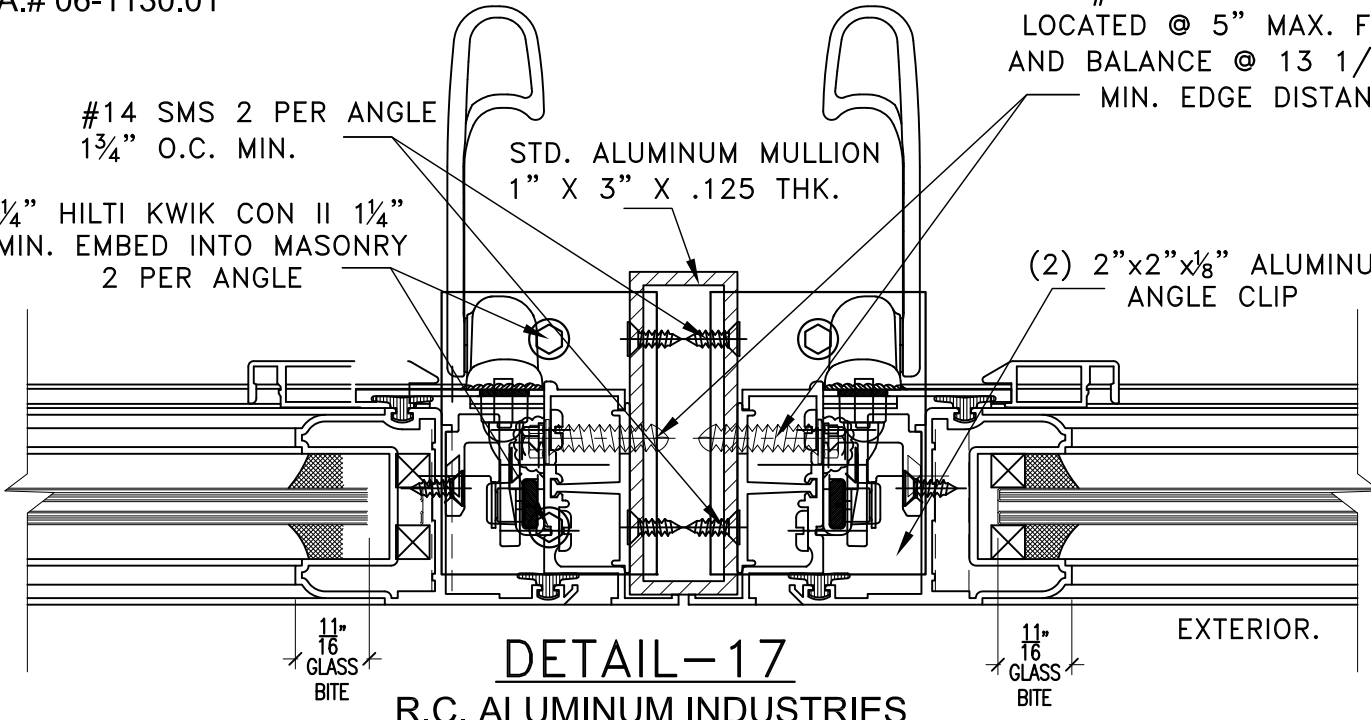
#14 SMS 2 PER ANGLE  
 1 3/4" O.C. MIN.  
 1/4" HILTI KWIK CON II 1 1/4" MIN. EMBED INTO MASONRY  
 2 PER ANGLE

#14 SELF DRILLING SCREWS LOCATED @ 5" MAX. FROM CORNERS AND BALANCE @ 13 1/2" MAX. C.T.C. MIN. EDGE DISTANCE = 3"

STD. ALUMINUM MULLION  
 1" X 3" X .125 THK.

(2) 2"x2"x1/8" ALUMINUM ANGLE CLIP

**DETAIL-17**  
**R.C. ALUMINUM INDUSTRIES**  
 -SERIES "CM100" ALUM. CASEMENT  
 N.O.A.# 06-1130.01  
 -SERIES "ML100" ALUM. TUBE MULLION  
 N.O.A.# 04-0608.05.



REVISION  
 BY  
 DATE  
 NO.

PROJECT NAME AND LOCATION:  
 "VILLA OVI"  
 3110 SHERIDAN AVE.  
 MIAMI BEACH, FLORIDA 33139.

ARCHITECT:  
 "KOBUS&P" ARCHITECTURE AND INTERIOR DESIGN,  
 2915 BISCAYNE BLVD SUITE # 200  
 MIAMI, FLORIDA 33137.



GLASSLAND INC  
 4514 SW. 74th Ave.  
 Miami Florida 33155.  
 Pho: 786-388-1121  
 Fax: 786-388-1161

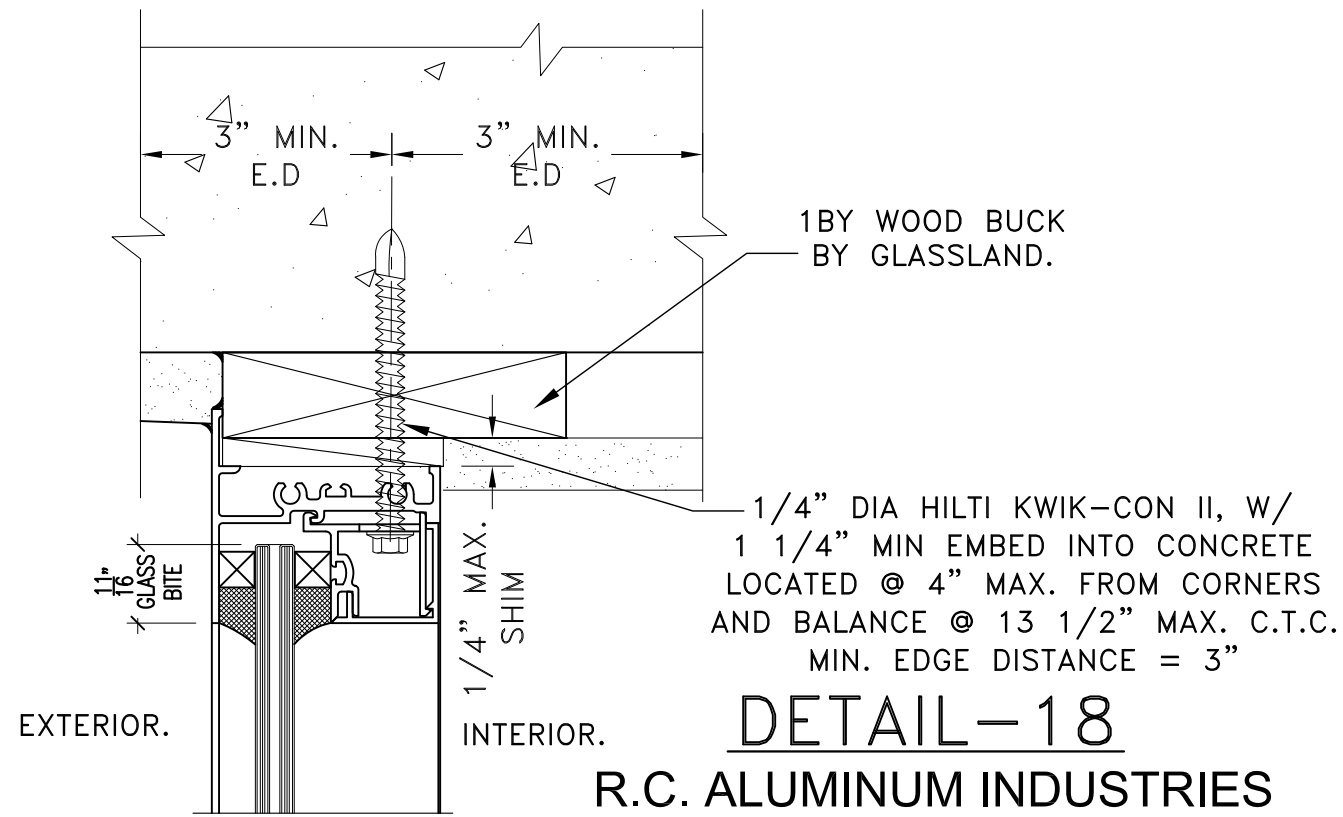
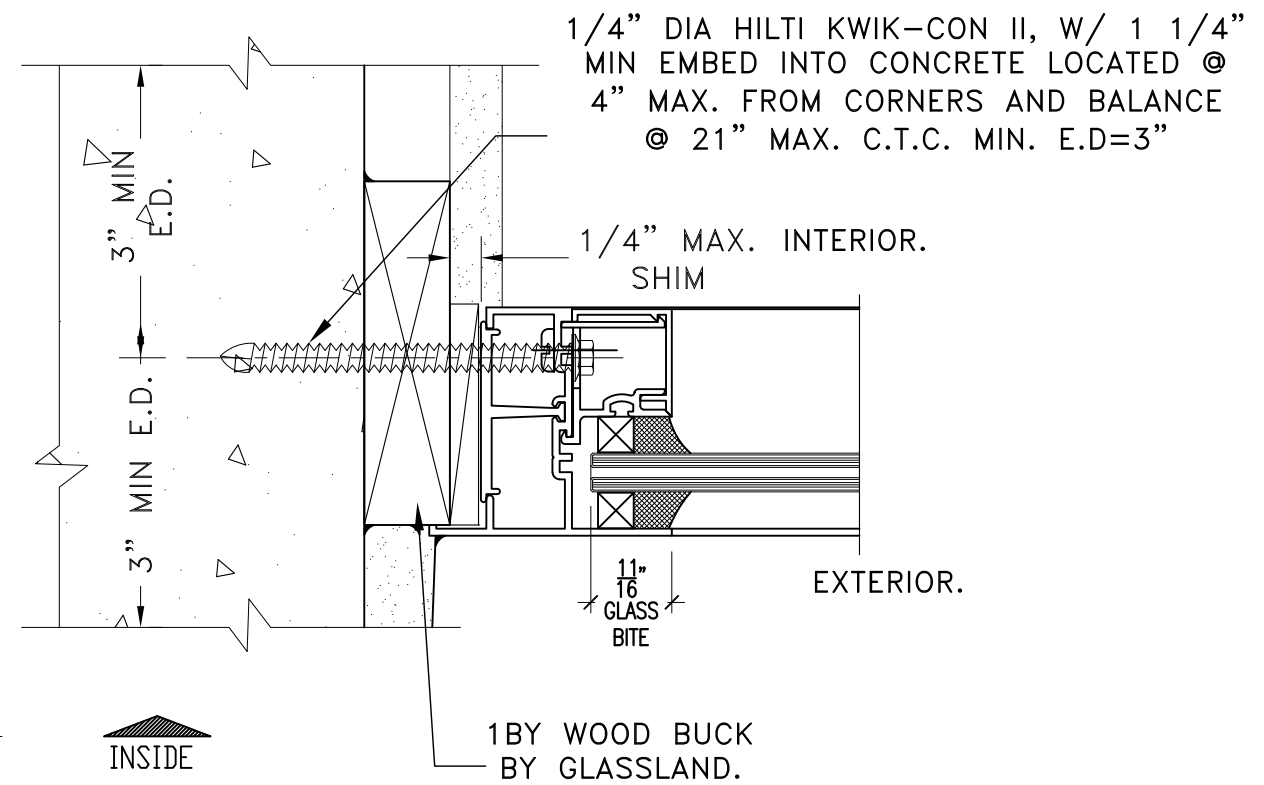
APPROVED BY:  
 A.B.  
 DATE:  
 7/08/08.

DRAWING DISCRPTION:  
 DETAILS.

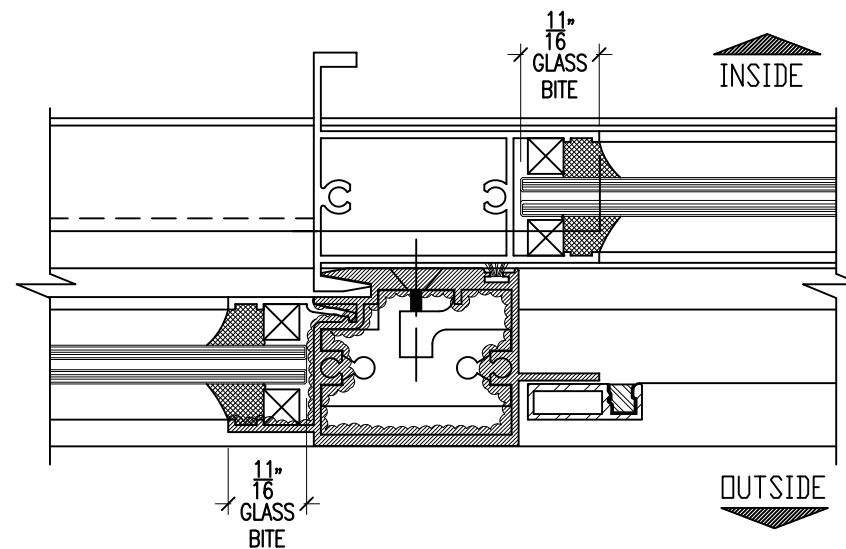
PROJECT NO.  
 1627

SHEET NO.  
 15 of 19

**DETAIL-19**  
**R.C. ALUMINUM INDUSTRIES**  
 SERIES "FX100" ALUM. FIXED WINDOWS  
 N.O.A.# 05-0815.01



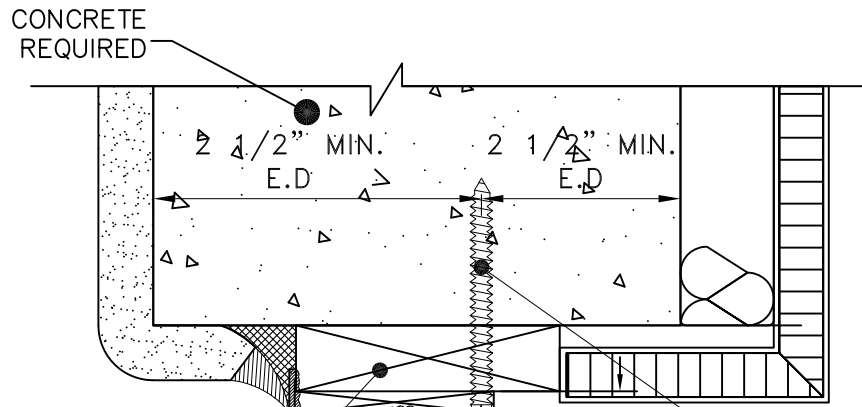
**DETAIL-18**  
**R.C. ALUMINUM INDUSTRIES**  
 SERIES "FX100" ALUM. FIXED WINDOWS  
 N.O.A.# 05-0815.01



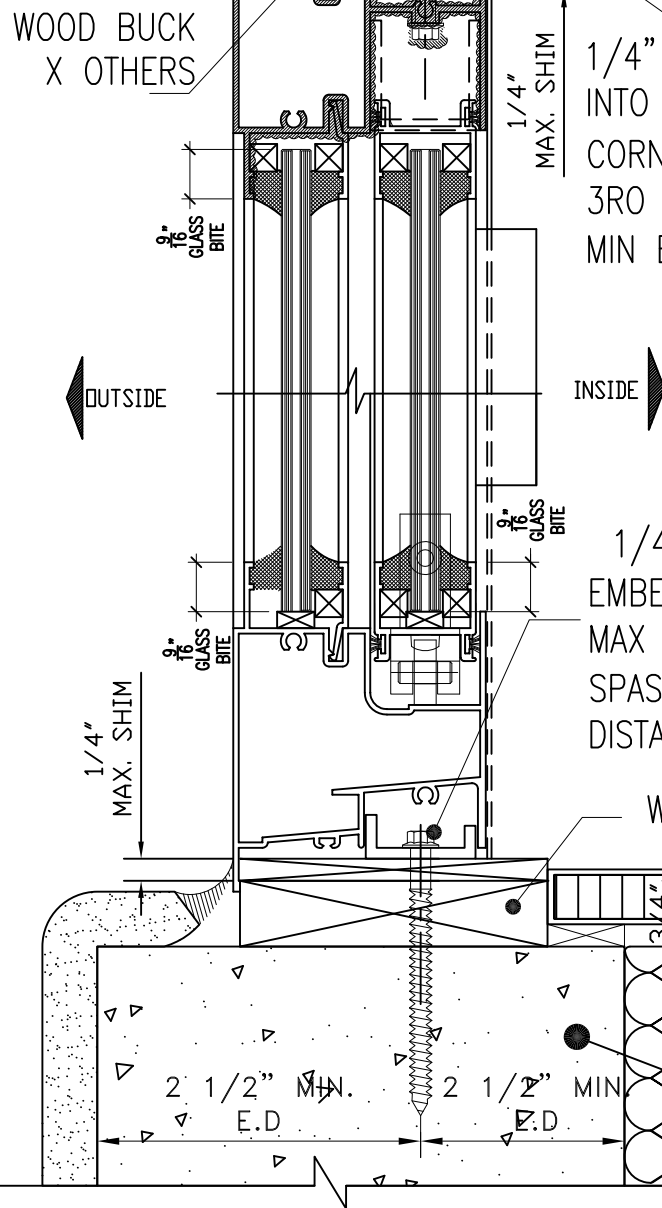
**DETAIL-20**  
 R.C. ALUMINUM INDUSTRIES  
 SYSTEM: "HR 100"  
 N.O.A. # 06-1130.02

NO.	DATE	BY	REVISION
PROJECT NAME AND LOCATION: "VILLA OM" 3110 SHERIDAN AVE. MIAMI BEACH, FLORIDA 33139.			
ARCHITECT: "KOBICKI" ARCHITECTURE AND INTERIOR DESIGN, 2915 BISCAYNE BLVD SUITE # 200 MIAMI, FLORIDA 33137.			
GLASSLAND INC 4514 SW. 74th Ave. Miami Florida 33155. Pho: 786-388-1121 Fax: 786-388-1161			
APPROVED BY:	DATE:	DRAWING DESCRIPTION:	
A.B.	7/08/08.	DETAILS.	
PROJECT NO. 1627			
SHEET NO. 16 of 19			





**DETAIL-21**  
 R.C. ALUMINUM INDUSTRIES  
 SYSTEM: "HR 100"  
 N.O.A. # 06-1130.02



**DETAIL-22**  
 R.C. ALUMINUM INDUSTRIES  
 SYSTEM: "HR 100"  
 N.O.A. # 06-1130.02

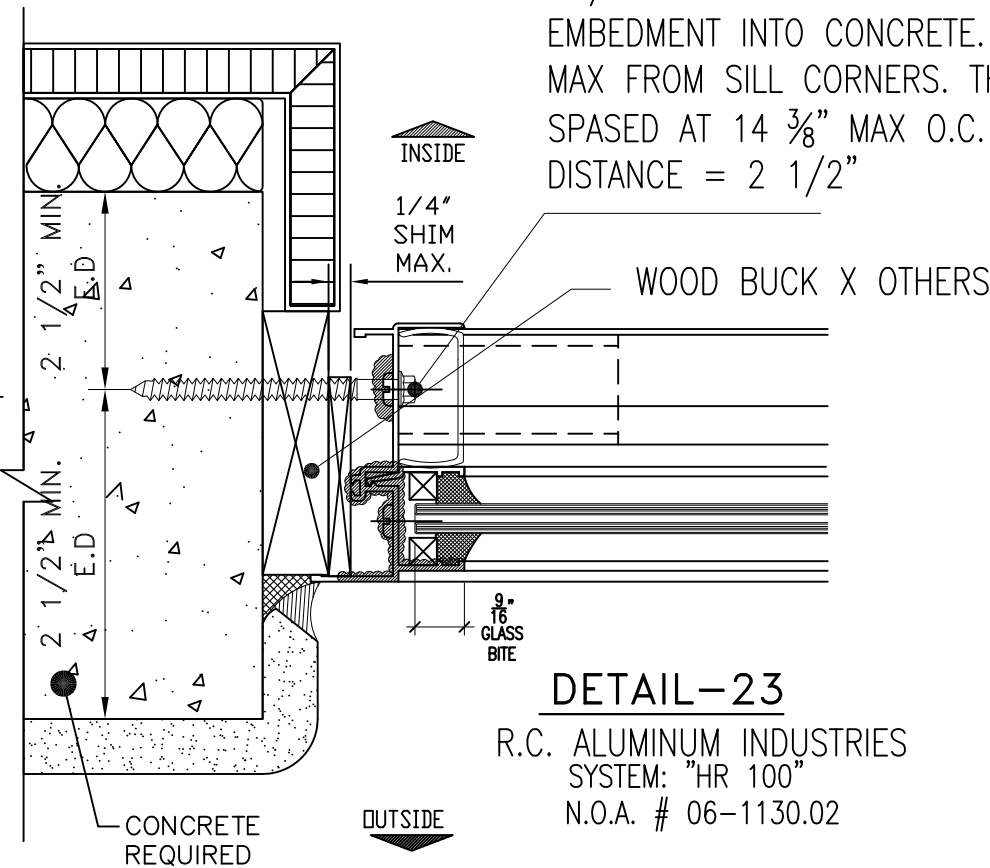
1/4" HILTI KWIK CON II WITH 1 1/4" MIN EMBEDMENT INTO CONCRETE. 1ST. @ 4" MAX FROM EACH HEAD CORNERS. 2nd 16 1/4" MAX. AT HEAD EACH SIDE & 3RD (2) @ 7" FROM EACH SIDE MIDPOINT. MIN EDGE DISTANCE 2 1/2" INTO CONCRETE.

1/4" HILTI KWIK CON II WITH 1 1/4" MIN EMBEDMENT INTO CONCRETE. 1ST. @ 4" MAX FROM SILL CORNERS. THE REST SPACED AT 13 3/4" MAX O.C. MIN EDGE DISTANCE = 2 1/2"

WOOD BUCK X OTHERS

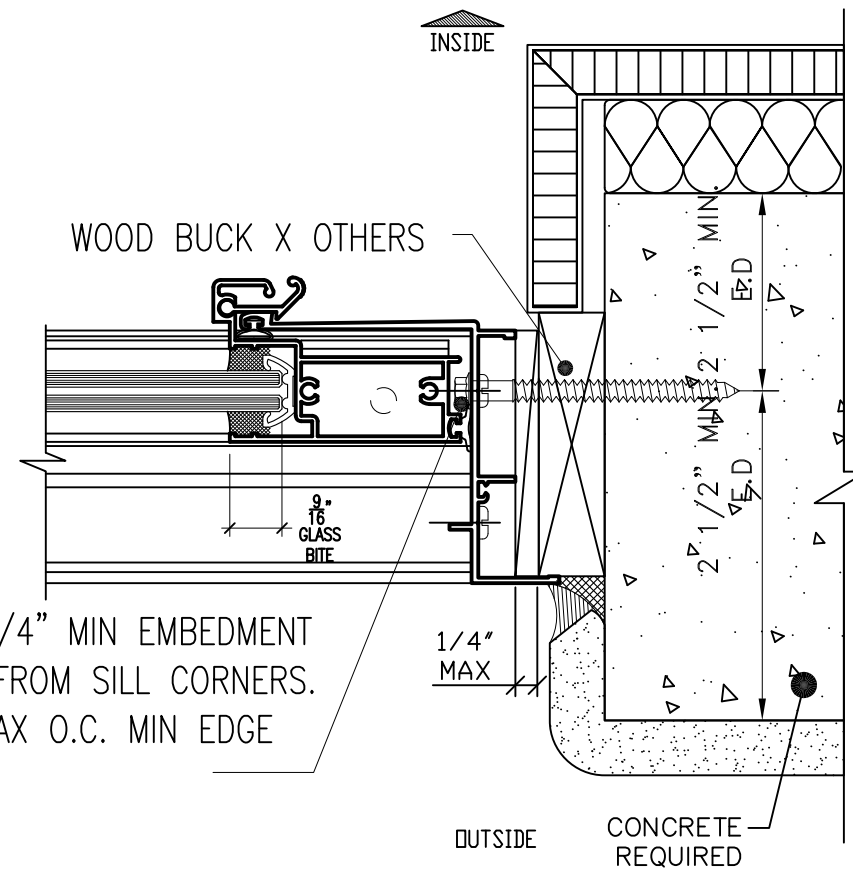
**DETAIL-24**  
 R.C. ALUMINUM INDUSTRIES  
 SYSTEM: "HR 100"  
 N.O.A. # 06-1130.02

1/4" HILTI KWIK CON II WITH 1 1/4" MIN EMBEDMENT INTO CONCRETE. 1ST. @ 4" MAX FROM SILL CORNERS. THE REST SPACED AT 14 3/8" MAX O.C. MIN EDGE DISTANCE = 2 1/2"



1/4" HILTI KWIK CON II WITH 1 1/4" MIN EMBEDMENT INTO CONCRETE. 1ST. @ 4" MAX FROM SILL CORNERS. THE REST SPACED AT 14 3/8" MAX O.C. MIN EDGE DISTANCE = 2 1/2"

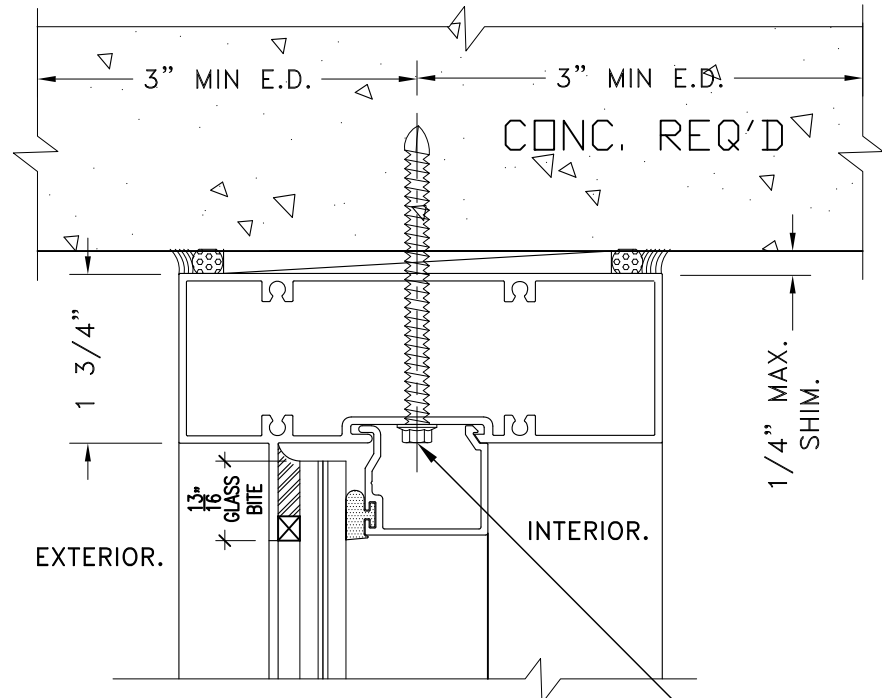
**DETAIL-23**  
 R.C. ALUMINUM INDUSTRIES  
 SYSTEM: "HR 100"  
 N.O.A. # 06-1130.02



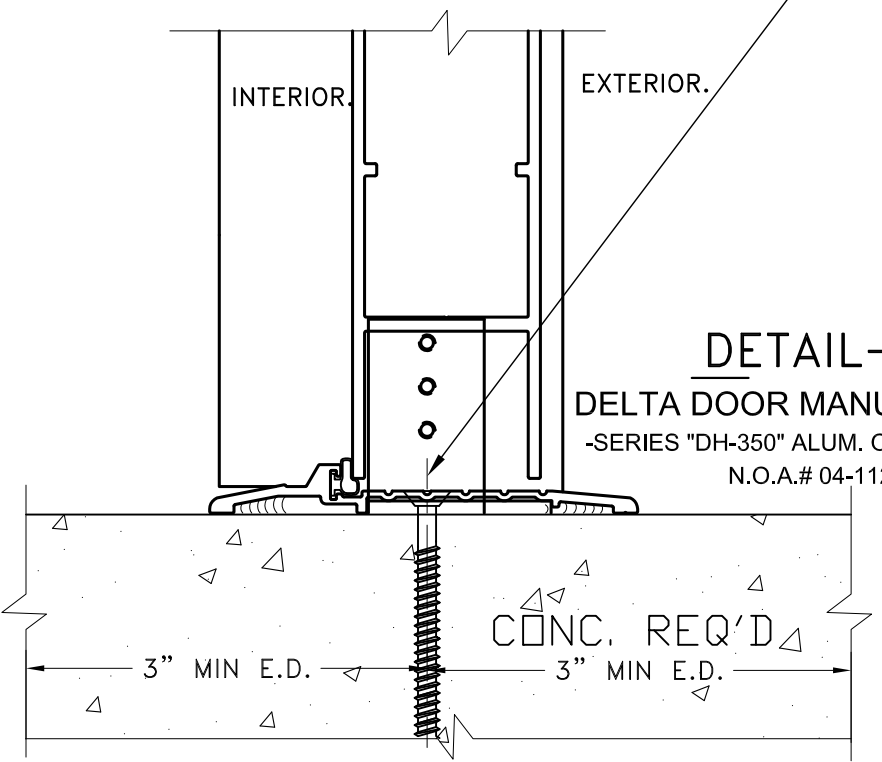
PROJECT NAME AND LOCATION:	"VILLA OVI" 3110 SHERIDAN AVE. MIAMI BEACH, FLORIDA 33139.
ARCHITECT:	"KOBICKAR" ARCHITECTURE AND INTERIOR DESIGN, 2915 BISCAYNE BLVD SUITE # 200 MIAMI, FLORIDA 33137.
GLASSLAND INC	4514 SW. 74th Ave. Miami Florida 33155. Pho: 786-388-1121 Fax: 786-388-1161
APPROVED BY:	
DRAWN BY:	A.B.
DATE:	7/08/08.
DRAWING DISCIPLINE:	DETAILS.
PROJECT NO.	1627
SHEET NO.	17 of 19

**DETAIL-27**

**DELTA DOOR MANUFACTURING**  
 -SERIES "DH-350" ALUM. OUTSWING DOOR  
 N.O.A.# 04-1123.01

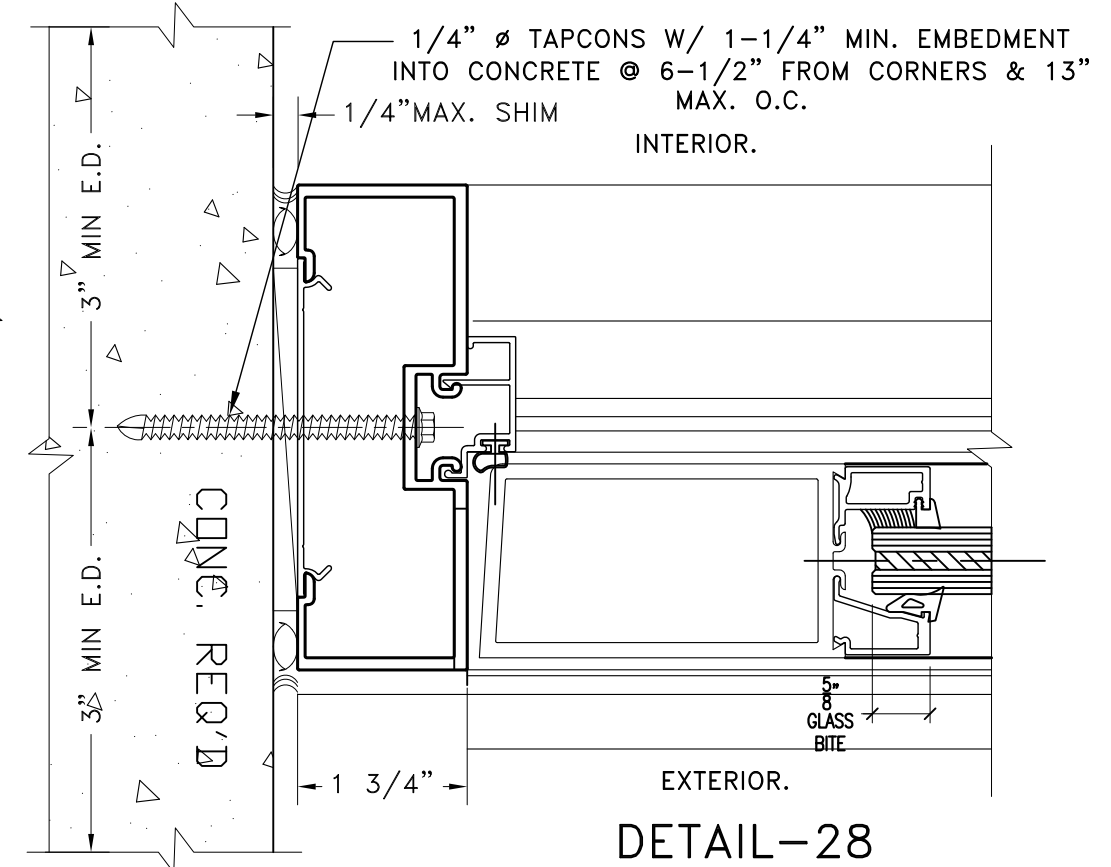


1/4"Ø TAPCON W/1-3/8"MIN EMBEDMENT 1st  
 2-1/2" FROM EACH SIDE OF DOOR'S FRAME THE  
 REST AT HEAD 7 1/2" & AT SILL 15 1/2" MAX. SPACING  
 BETWEEN FASTENERS.



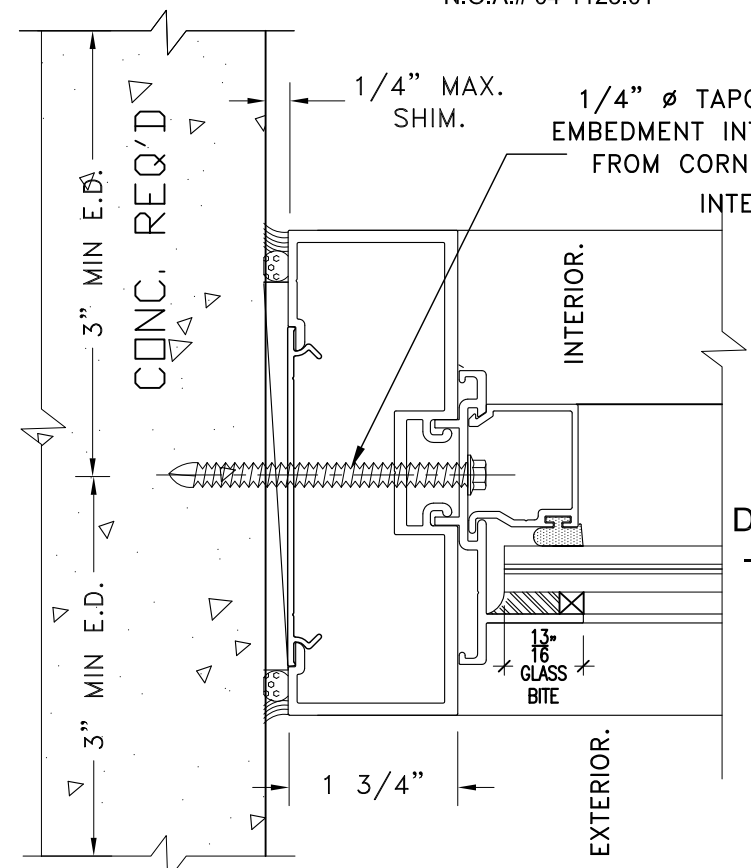
**DETAIL-26**

**DELTA DOOR MANUFACTURING**  
 -SERIES "DH-350" ALUM. OUTSWING DOOR  
 N.O.A.# 04-1123.01



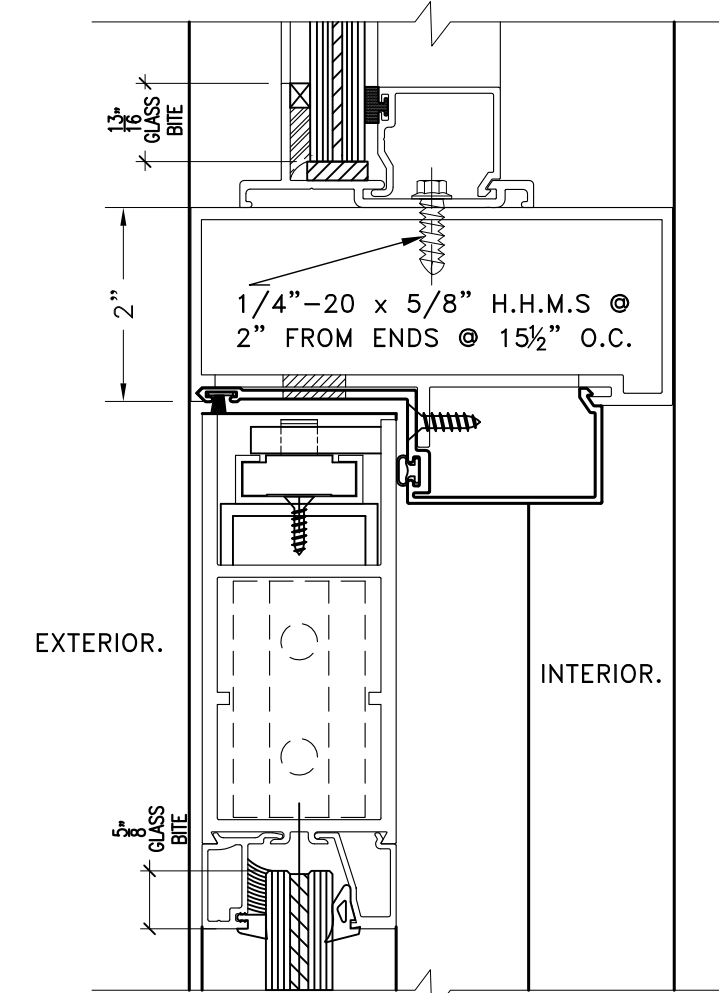
**DETAIL-28**

**DELTA DOOR MANUFACTURING**  
 -SERIES "DH-350" ALUM. OUTSWING DOOR  
 N.O.A.# 04-1123.01



**DETAIL-29**

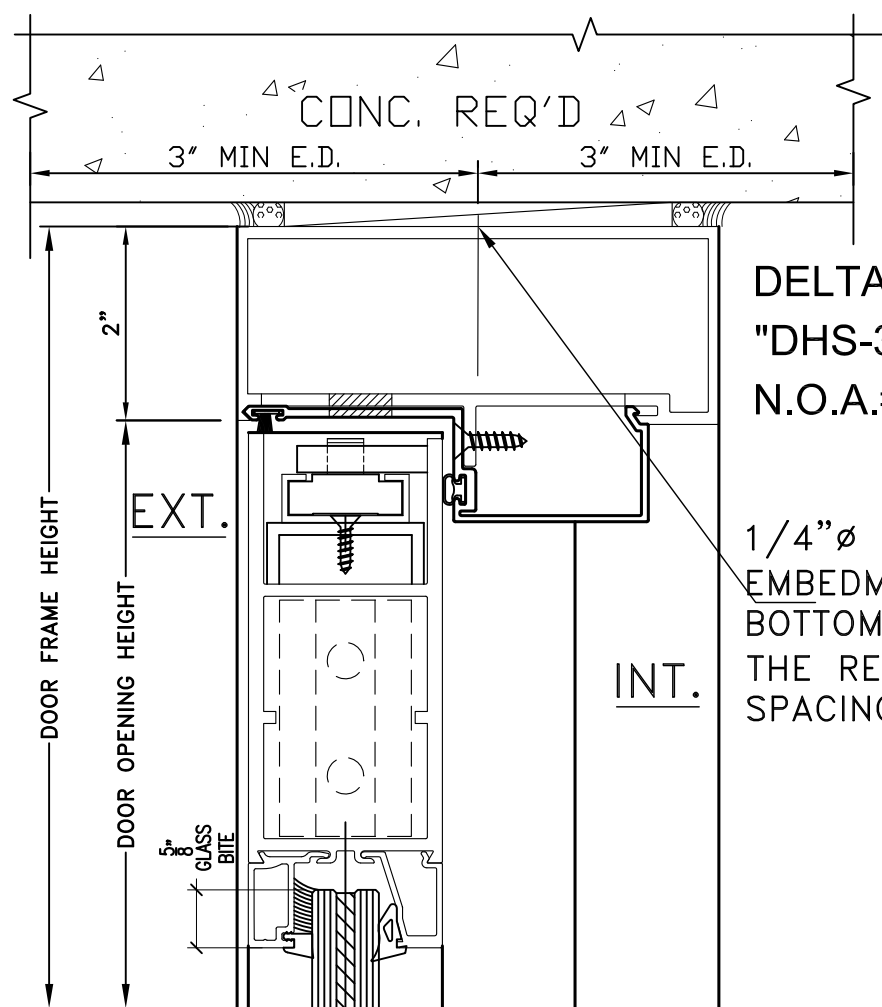
**DELTA DOOR MANUFACTURING**  
 -SERIES "DH-350" ALUM. OUTSWING DOOR  
 N.O.A.# 04-1123.01



**DETAIL-25**

**DELTA DOOR MANUF./INC.**  
 "DHS-350" ALUMINUM DOOR  
 N.O.A.# 04-1123.01

APPROVED BY:		PROJECT NAME AND LOCATION:	
DRAWN BY: A.B.		"VILLA OVI" 3110 SHERIDAN AVE. MIAMI BEACH, FLORIDA 33139.	
DATE: 7/08/08.		ARCHITECT:	
DRAWING DESCRIPTION: DETAILS.		"KOBICKI" ARCHITECTURE AND INTERIOR DESIGN, 2915 BISCAYNE BLVD SUITE # 200 MIAMI, FLORIDA 33137.	
PROJECT NO. 1627		REVISION	
SHEET NO. 18 of 19		BY	
		DATE	
		NO.	



### DETAIL 30

DELTA DOOR MANUF./INC.  
 "DHS-350" ALUMINUM DOOR  
 N.O.A.# 04-1123.01

1/4"Ø TAPCON W/1-3/8" MIN  
 EMBEDMENT 1st 2-1/2" FROM  
 BOTTOM AND TOP OF JAMB.  
 THE REST 7-1/2" MAX.  
 SPACING BETWEEN FASTENERS

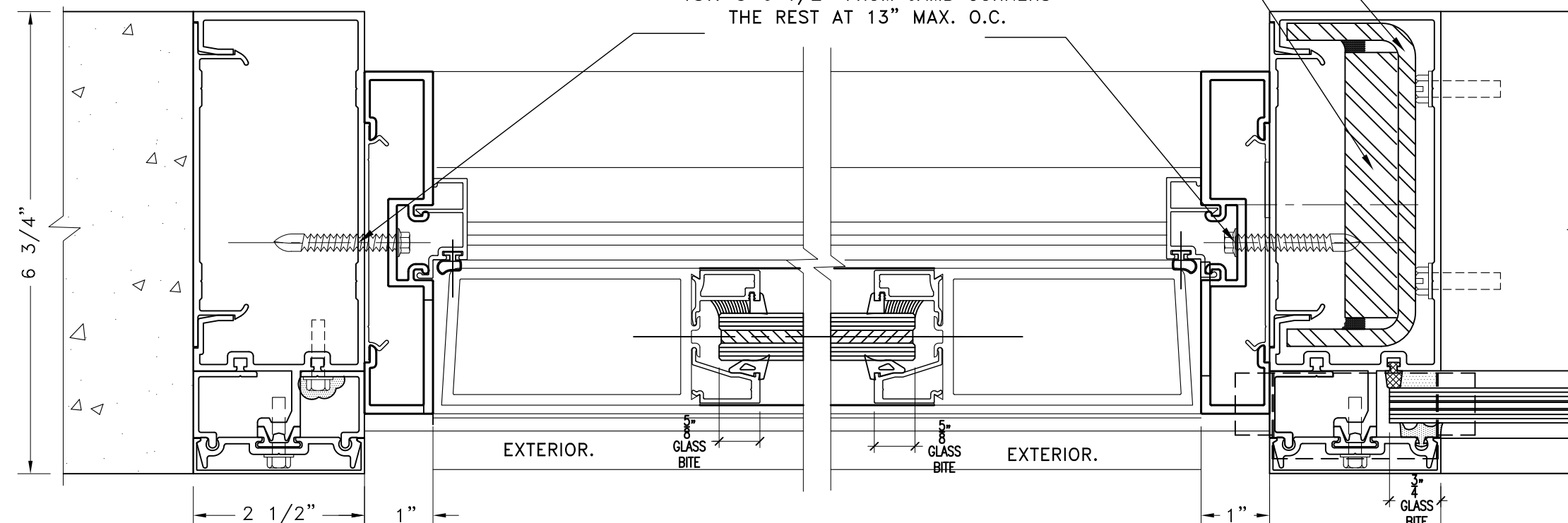
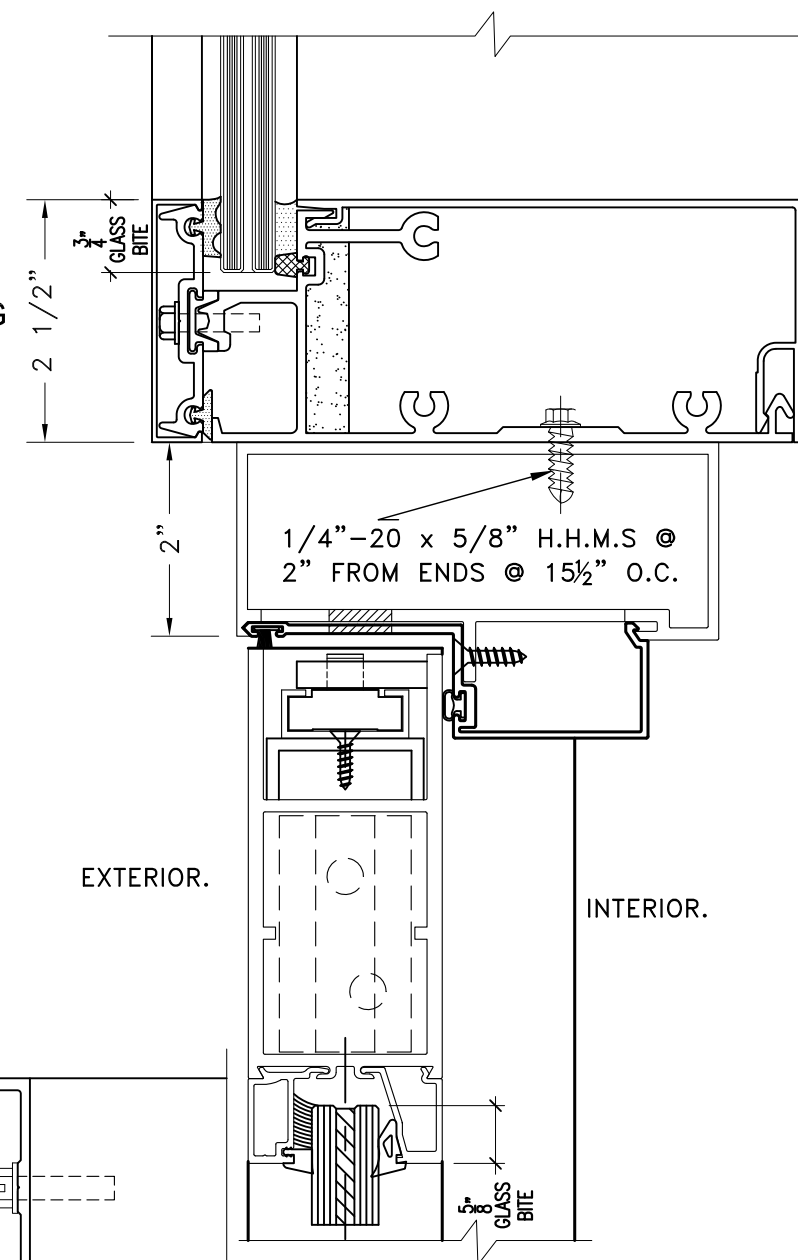
4-11/16" X 1-7/8"  
 X 1/4" ASTM-A36 STEEL  
 REINFORCEMENT.

CONT. 3/4" X 4" ASTM A-36  
 STEEL BAR.

1/4" DIA. TEKS OR SELF DRILLING  
 SCREWS  
 1ST. @ 6 1/2" FROM JAMB CORNERS  
 THE REST AT 13" MAX. O.C.

### DETAIL 33

VISTAWALL  
 "HR-250" CURTAIN WALL SYSTEM..  
 N.O.A.# 05-1102.09.  
 DELTA DOOR MANUFACTURING  
 -SERIES "DH-350" ALUM. OUTSWING DOOR  
 N.O.A.# 04-1123.01



### DETAIL 31

VISTAWALL DELTA DOOR MANUFACTURING  
 "HR-250" CURTAIN WALL SYSTEM.. -SERIES "DH-350" ALUM. OUTSWING DOOR  
 N.O.A.# 05-1102.09. N.O.A.# 04-1123.01

### DETAIL 32

NO.	DATE	BY	REVISION
PROJECT NAME AND LOCATION: "VILLA OVI" 3110 SHERIDAN AVE. MIAMI BEACH, FLORIDA 33139. ARCHITECT: "KOBUS&P" ARCHITECTURE AND INTERIOR DESIGN. 2915 BISCAYNE BLVD SUITE # 200 MIAMI, FLORIDA 33137.			
GLASSLAND INC 4514 SW. 74th Ave. Miami Florida 33155. Pho: 786-388-1121 Fax: 786-388-1161			
APPROVED BY:	DATE:	DRAWING DISCUSSION:	
A.B.	7/08/08.	DETAILS.	
PROJECT NO. 1627			
SHEET NO. 19 of 19			